

Tredyffrin/Easttown School District
BOARD EDUCATION COMMITTEE

November 11, 2015
1:00 PM
TEAO, Meeting Room 200

Agenda

- I. Approval of October 14, 2015 Minutes

- II. Public Comment

- III. Demographer's Report

- IV. Middle School Guidance

- V. Technology Update
 - Learning Management System
 - Middle School Email

- VI. Other

Board Education Committee Goals

1. Review the recommended administrative changes to the academic program that have impact on curriculum or budget and communicate recommendations to the full Board.
2. Review all enrollment and staffing numbers and projections for the year to determine the extent to which educational needs are addressed.
3. Review student assessment results.
4. Recommend informational education presentations to include in the monthly Board meetings as priority discussions.
5. Receive administrative recommendation for school calendar and make recommendation to the full Board.
6. Review current programming to determine alignment with federal and state mandates including Keystone Exams content and implementation.
7. Make recommendations to Board committees to communicate appropriate educational positions to legislators.
8. Review current programming at the middle school level.

Next Meeting Date: January 13, 2016

DRAFT PENDING COMMITTEE APPROVAL
BOARD EDUCATION COMMITTEE MEETING MINUTES
October 14, 2015

Tredyffrin/Easttown Administrative Offices
1:00 p.m.

Attending all or part of the meeting:

Board Committee Members: Karen Cruickshank (Chair), Jim Bruce, Scott Dorsey, Pete Motel

Other Board Members: Kris Graham, Virginia Lastner

TE School District Representatives: Wendy Towle (Administrative Liaison), Patrick Gately, Richard Gusick, Mike Szymendera, Lisa Lukens

Community Members: Amy Alvarez, Jill Semmer, Cinda Marturano, Jamie Lynch

The meeting was called to order at 1:05 p.m.

Public Comment:

Jill Semmer commented on the **2016-2017 School Calendar**.
Amy Alvarez commented on the **2016-2017 School Calendar**.
Jamie Lynch commented on the **2016-2017 School Calendar**.
Cinda Marturano commented on the **Technology Update**.

Approval of Minutes:

The September 9, 2015 minutes were approved.

Committee Discussion and Recommendations:

The Committee reviewed the **2016-2017 School Calendar**. Three versions of the calendar were presented for consideration. In the first version, students would begin on the Monday prior to Labor Day and teachers would begin on the Wednesday of the previous week. In the second version, students would begin on the Tuesday after Labor Day and teachers would begin on the Wednesday of the previous week. In the third version, students would begin on the Monday prior to Labor Day but would have off the Friday of that first week, and teachers would begin on the Wednesday of the previous week. The Committee discussed all three options, with comments provided by community members and a representative of the TE Education Association. The Committee approved the first version of the calendar – starting before Labor Day with school held on the Friday before Labor Day. This calendar also includes the additional Act 80 days and days designated as local holidays according to Section 5-1502(a).

The Committee discussed the **Technology Update**. The Committee received updates on the current and future student and staff technology access themes across the elementary, middle, and high school levels, as well as information about Learning Management Systems. Presented with a continuum of possible access opportunities, the Committee approved the District to move forward with identification of needs and costs associated with current and future student

technology access and to explore all opportunities on the continuum. The Committee also recommended moving forward with further study of Learning Management Systems.

The meeting was adjourned at 2:25 p.m.

Next meeting: **November 11, 2015**

Demographic Study: October 2015 Update
Public School Enrollments
for
Tredyffrin/Easttown School District
940 West Valley Road , Suite 1700, Wayne, PA 19087

Prepared by



Sundance Associates

117 Greenvale Court
Cherry Hill, NJ 08034

Tel 856-755-0174

Fax 856-755-0176

E-mail: gsundell@sundanceassoc.com

October 7, 2015

Table of Contents

	Pages
Executive Summary	
INTRODUCTION & BACKGROUND	
Introductory Notes	1
Methodology Notes	2
Public School District Profile	3-4
Municipal Profiles	5-6
Public & Private School Comparative Enrollment	7
GENERAL DEMOGRAPHICS	
Population Growth: Area, County and State	8
2010 Population by Age & Gender Pyramids	9-10
Comparative Populations by Age Group	11-12
District, Municipal and School Year Annual Births	13-15
HOUSING	
Residential Permitting for New Construction	16
Proposed New Residential Construction Map	17
New Students from New Housing	18-20
METHODOLOGY	
Cohort Survival Projections; Mathematical Analysis	21
Adjustments to Standard Methods	22
Review of Cohort Survival Ratios by Grades	23
ENROLLMENT PROJECTIONS	
District Wide Enrollments by Year	24
Elementary Grade K-4 Enrollments	25
Middle School Grade 5-8 Enrollments	26
High School Grade 9-12 Enrollments	27
Comparative Enrollments by Grade Level Organization	28
Beaumont Elementary	29
Devon Elementary	30
Hillside Elementary	31
New Eagle Elementary	32
Valley Forge Elementary	33
Comparative Elementary Enrollments by School	34
Tredyffrin-Easttown Middle	35
Valley Forge Middle	36
Comparative Middle Enrollments by School	37



Executive Summary

The Methodology used in projecting enrollments is the recommended method of the Pennsylvania Department of Education (PDE) and is known as “Cohort Survival” or “Grade Level Progression”.

The Tredyffrin-Easttown School District had a student population of 6,575 students (Oct 2015) in 8 schools, organized as 5) Grade K-4 Elementary, 2) Grade 5-8 Middle, and 1) Grade 9-12 High School.

The Municipalities in the School District include two townships in Chester County, Tredyffrin with a 2010 population over 29,300, and Easttown with a 2010 population over 10,400.

Private School enrollment levels start at 24% in Kindergarten (a half-day program), reducing to 12% in Grade 1-4, increasing to 21% in Grades 5-8 and ending at nearly 26% in Grades 9-12.

Population Trends are such that the school district area had a population of only 11,647 in 1950 and grew 322% to the year 1990. The County grew 236% and the State grew 120% in the same period. Growth between 1950 and 1990 averaged approximately 6,500 persons per decade. Growth has slowed over the last 20 years, growing by 1,734 persons from 1990 to 2000, and by only 477 persons from 2000 to 2010.

Age & Gender Pyramids, with population counts in 5-year age groupings, show Child Bearing Age groups to be relatively small; and that the school age and pre-school age groups are successively smaller in size.

Population by Age Group from 2000 to 2010 reveals decreases in the Pre-School Age and Childbearing age, and increases in the School Age group, indicators of future decreased enrollments.

Live Births in the TESD have been declining since year 2006 with a high of 444 Births, and a year 2010 low of 322 Births, around a recent 6-year average of 348 births. The 6-year trend is for 5 fewer births per year.

School Year Births have been used in the projection based on a September 1 to August 30 basis. A 6-year average of 340 births per year is used in the future years for which data is not available

Historic Residential permitting for new construction peaked at 69 units in year 2005. Permitting from 2009-2012 averaged 5 units per year. In 2013 and 2014 permitting increased to 27 and 26 units, respectively.

Future Residential Permitting will increase due to five approved, multi-family projects totaling 399 units. While many of the units are targeted to older, affluent, empty nesters, none are Age-Restricted.

School Age Children that will be generated by these 399 units total 75, of which 70 will attend public schools. Modifications to the projection for students from new housing are made in this projection in the appropriate years, schools and grade levels.

The TESD, with a year 2010 constituent population of 39,809 continues to grow but at a much slower rate than in the past.

While the School Age group increased in size over the 10 years between census, Pre-School Age and Child-bearing Age groups decreased in size.

Annual Births peaked in 2006 and have been decreasing by 5 per year.

399 units of new multi-family housing will impact enrollments by an additional 70 students, about 5 per grade level.



Feeder System modification to student distribution is made in the School-level projections to address the Hillside Elementary students split to both Tredyffrin-Easttown (55%) and Valley Forge Middle (45%) Schools.

Cohort Survival Ratio is adjusted for Birth to Kindergarten using only the last three years instead of 6 years.. This impacts enrollment with an increase of 10 Kindergarten students per year, and in succeeding grades. All other Survival Ratios are the standard 5-year ratios.

District-wide Enrollment increased by 241 students in the historic projection period ending at 6,575 students. The district enrollment will decrease by 41 students to 6,534 in the projection period, before decreasing by 228 students in the extended period to 6,307 students.

Elementary School Enrollment for Grades K-4 increased 133 students in the historic period ending at an all-periods high of 2,425 students. Enrollments will then decrease by 288 students and end the projection period at 2,139 students. Enrollments stabilize in the extended projection period averaging 2,188 students.

The District experienced a 241 student increase in the 6-year historic period. All individual school enrollments increased in the historic period except Hillside and Beaumont Elementary Schools.

Elementary	CHANGE			AVERAGE		
	Historic	Projected	Extended	Historic	Projected	Extended
Beaumont	-37	-49	+13	418	367	362
Devon	+68	-71	+16	550	541	535
Hillside	-14	-49	+15	456	388	398
New Eagle	+3	-27	+8	430	436	420
Valley Forge	+113	-84	+19	518	491	490
	+133	-286	+70	2370	2215	2198

In the projection period, the district enrollment will decrease by 41 students. All elementary school enrollments will decrease,... while middle school will increase only at Valley Forge, and high school enrollments continue to increase .

Middle School Enrollments, for Grades 5-8, increased by 59 students to 2,084 students in the historic period. During the projection period, enrollments increase to a high of 2,266 students near the end of the period in 2019. During the extended projection period, enrollments decrease to 1,941 students by year 2024, that is 84 fewer students than the 2010 start of the historic period.

In the extended projection period district enrollment decreases by 228 students. Elementary enrollment is slightly increasing, middle school enrollments are in a sharp decline, and high school enrollments begin to decrease.

Middle	CHANGE			AVERAGE		
	Historic	Projected	Extended	Historic	Projected	Extended
Tredyffrin-Easttown	+34	-4	-104	1072	1091	981
Valley Forge	+25	+73	-108	999	1103	990
	+59	+91	-224	2071	2207	1992

High School Enrollments for grades 9-12, increased 48 students to 2,066 in the historic period. During the projected period, enrollments will continue to increase by 164 students to 2,220 students. During the extended projection period enrollments will continue to increase to a peak of 2,318 students in year 2023 before ending the period at 2,146 students.

High	CHANGE			AVERAGE		
	Historic	Projected	Extended	Historic	Projected	Extended
Conestoga	+49	+154	-74	2050	2158	2246



Sundance Associates has been retained by the Tredyffrin-Easttown Public Schools to prepare a demographic study of the district and to project enrollments as an update to the October 2014 study.

These projections take into account the dynamics of the district and may or may not agree with the enrollment projection posted on the web by the Pennsylvania Department of Education (PDE)..

Historic enrollment data are from the official annual October submissions to PDE. Birth data is from the official web site of the Pennsylvania Department of Health.

The historical enrollments for this demographics study begin with the October 1 enrollment reports for the 2010-11 school year and end with the October 1 enrollment reports for 2015-16 school year. In projection graphs, the historical enrollments appear in red.

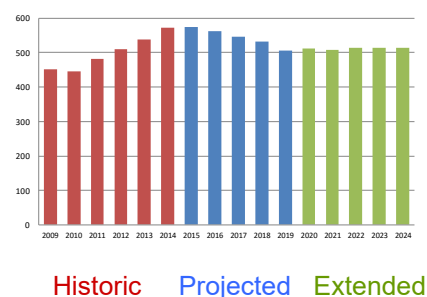
The five-year enrollment projections begin with the 2016-17 school year and end with the 2020-21 school year and appear in blue.

The five-year extended enrollment projections begin with the 2021-22 school year and end with the 2025-26 school year and appear in green.

In addition to the district level projection, by grade and year, projections have been made for the elementary/middle/high school grade level organization, and for individual schools.

Extensive data and graphics that support understanding of general demographic trends are provided, however, it is important to understand that they are for support purposes only. This projection is made based on Live Births and Historic Enrollment, *the two primary determinants of future enrollments*, and then modified for the impact of public school age children from approved new housing.

The information in this demographic report is suitable for inclusion in any document to be forwarded to the Pennsylvania Department of Education for matters concerning school facilities.



Although many techniques have been used to predict demographic trends including future enrollment, the method most widely employed and accepted for predicting future school enrollment is the “**Cohort-Survival**” method. **This method is considered the most reliable.** It captures the key determinants of enrollment, yet also allows for changes in historical trends, is relatively simple to apply and the data requirements are reasonable and usually easily fulfilled.

The major assumption underlying the cohort survival method is that the past to a large extent is a reasonable predictor of the future: that is, given the number of births and historical enrollment, the net effect of all other factors remain in relative balance.

However, any of the following factors could cause a significant change in projected student enrollments, and adjustments to the standard methodology may be made for:

- Boundary adjustments, school openings or consolidation
- Changes/additions in program offerings
- Preschool programs
- Change in grade configuration
- General Economic Conditions, Interest rates/unemployment shifts
- Magnet/Charter/Private school opening or closure
- Zoning changes
- New housing activity; planned, but not built, housing
- In and Out-Migration

The cohort-survival method requires the calculation of the ratio of the number of children in one grade in one year compared to the number of children who “survive” the year and enroll in the next grade the following year (see detailed Mathematical Analysis, page 21). Fluctuations in such data from year to year create a pattern over time from which an average rate may be calculated to project enrollment.

The reliability of the cohort-survival method is related to both the number of years one is projecting as well as the relative volatility of the historical data. Projections covering five years or less, especially at the elementary level, tend to be more reliable than projections going out more than five years. In addition, in some communities the numbers of births, population, household size, and net migration rates have held relatively steady which increases the reliability of the results. In other communities, one or more such variables exhibit extreme variation leading to less reliable results.

The major assumption underlying the cohort survival method is that the past to a large extent is a reasonable predictor of the future.

The most important factors are Live Birth counts and historical, grade level Enrollment counts.



The Institute of Educational Sciences, 1997 publication “Accuracy of Enrollment Forecast Methods”, reviews three special-purpose forecasting methods ... and three methods of universal applicability (the cohort-survival, percentage-survival, and law-of-growth methods) to help administrators grasp enrollment forecasting technicalities. **A comparison shows that the cohort-survival method consistently produced lower error rates for each five-year projection for median or mean error rates.**

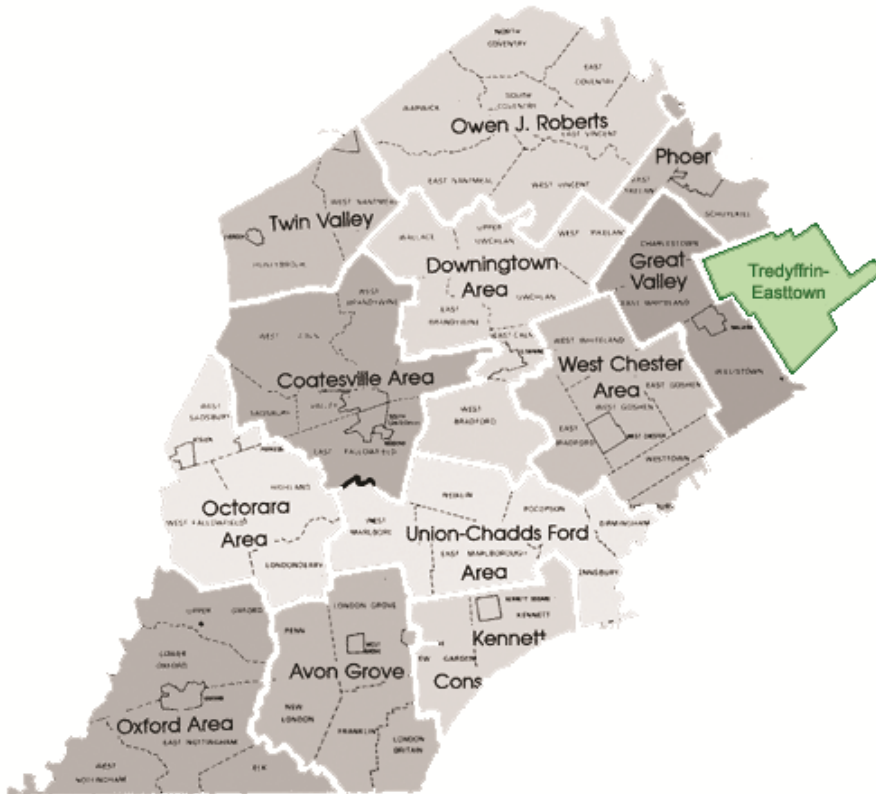
Tredyffrin/Easttown School District (TESD) is a school district based in Tredyffrin Township, Chester County, Pennsylvania.

TESD serves Tredyffrin Township and Easttown Township, and is one of the several school districts serving the Pennsylvania Main Line. TESD serves all or portions of several communities wholly or partly in the two townships, including Berwyn, Malvern, Chesterbrook, Daylesford, Devon, Paoli, Strafford, Wayne, and Radnor.

In the 2015-2016 school year, the school district had 6,575 enrolled students. In 2008, Philadelphia Magazine ranked the school district the best in the Philadelphia area.

There are 1 high school, 2 middle schools, and 5 elementary schools in the Tredyffrin/Easttown School District.

Chester County School Districts

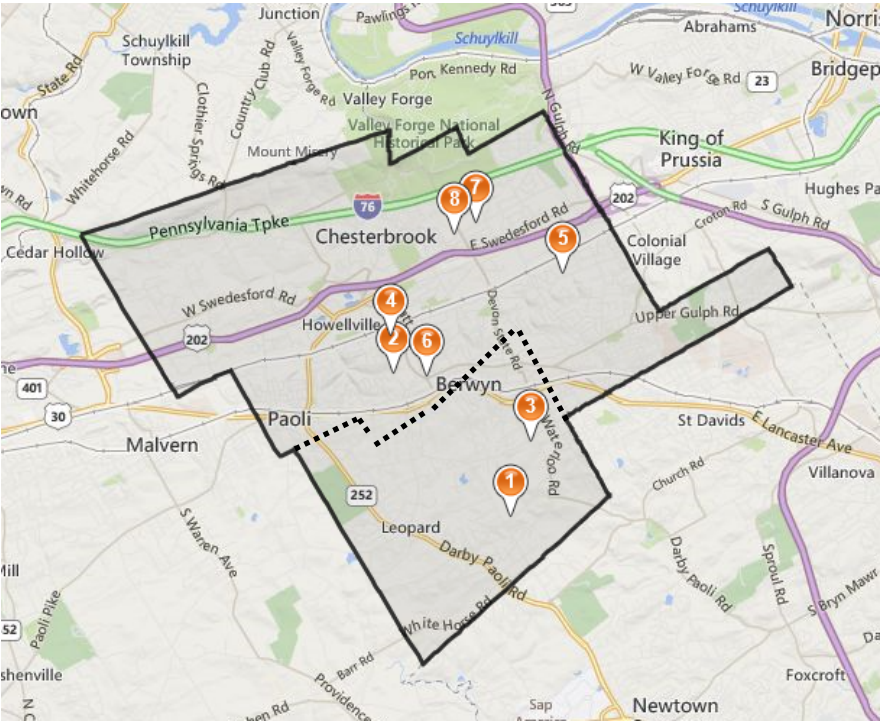


The highly-ranked Tredyffrin-Easttown School District, in eastern Chester County, serves over 6,500 students in grades K-12.

Profile: School District



- 1. Beaumont Elementary School
575 Beaumont Rd,
Devon, Pa 19333
Tel 610-240-1400
- 2. Conestoga Sr. High School
200 Irish Rd.,
Berwyn, Pa 19312
Tel 610-240-1000
- 3. Devon Elementary School
400 So. Fairfield Rd.,
Devon, Pa 19333
Tel 610-240-1450
- 4. Hillside Elementary School
507 Howellville Rd.
Berwyn, Pa 19312
Tel 610-240-1500
- 5. New Eagle Elementary School
507 Pugh Rd.
Wayne, Pa 19087
Tel 610-240-1550
- 6. Tredyffrin-Easttown Middle School
801 Conestoga Road
Berwyn, Pa 1931
Tel 610-240-1200
- 7. Valley Forge Elementary School
99 Walker Rd.
Wayne, Pa 19087
Tel 610-240-1600
- 8. Valley Forge Middle School
105 West Walker Rd.
Wayne, Pa 19087
Tel 609-240-1300



Tredyffrin Township Municipal Level Demographics

Tredyffrin Township (Welsh: Tre (town) + Dyffryn (valley)) is a township located in eastern Chester County, Pennsylvania, United States. The population was 29,332 at the 2010 census.

Originally settled in the late 17th century, Tredyffrin is bounded by Delaware and Montgomery counties. It includes on its northern boundary a small part of Valley Forge National Historical Park, where George Washington encamped during the American War of Independence. Tredyffrin and the entire Great Valley region also have many limestone deposits.

Unincorporated communities within Tredyffrin Township include Chesterbrook, Strafford, a portion of Paoli, and a portion of Wayne. Tredyffrin is bordered by Easttown, East Whiteland, Willistown, Charlestown, Upper Merion, Radnor and Schuylkill townships.

According to the United States Census Bureau, the township has a total area of 19.9 square miles (52 km²), of which 19.8 square miles (51 km²) is land and 0.04 square miles (0.10 km²), or 0.15%, is water.

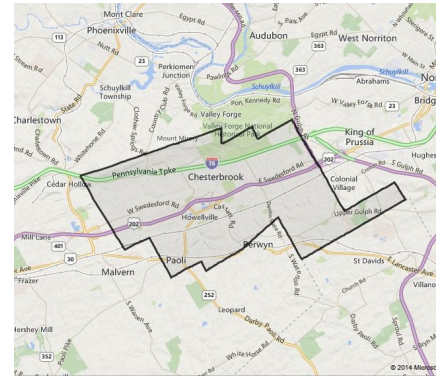
At the 2010 census, the township was 83.3% non-Hispanic White, 3.3% Black or African American, 0.1% Native American, 9.8% Asian, and 1.4% were two or more races. 2.2% of the population were of Hispanic or Latino ancestry.

As of the census of 2000, there were 29,062 people, 12,223 households, and 7,834 families residing in the township. The population density was 1,464.9 people per square mile (565.6/km²). There were 12,551 housing units at an average density of 632.6 per square mile (244.3/km²).

The racial makeup of the township was 90.88% White, 2.84% African American, 0.11% Native American, 5.12% Asian, 0.01% Pacific Islander, 0.29% from other races, and 0.74% from two or more races. Hispanic or Latino of any race were 1.20% of the population.

There were 12,223 households out of which 29.0% had children under the age of 18 living with them, 55.9% were married couples living together, 6.2% had a female householder with no husband present, and 35.9% were non-families. 30.1% of all households were made up of individuals and 9.1% had someone living alone who was 65 years of age or older. The average household size was 2.36 and the average family size was 2.99.

The median income for a household in the township was \$82,258, and the median income for a family was \$105,183 (these figures had risen to \$90,915 and \$121,809 respectively as of a 2007 estimate). Males had a median income of \$76,393 versus \$46,124 for females. The per capita income for the township was \$47,584. About 2.2% of families and 3.7% of the population were below the poverty line, including 4.6% of those under age 18 and 2.8% of those age 65 or over.



The 19.8 square mile Tredyffrin Township has a 2010 population of 29,332 persons.

Easttown Township Municipal Level Demographics

Easttown Township is a township in Chester County, Pennsylvania, United States. The population was 10,477 at the 2010 census.

The land that eventually became Easttown Township was once part of the Welsh Tract, a large expanse of land promised by William Penn to a group of Welsh Quaker settlers in which they would be able to speak and conduct business in the Welsh language. While the autonomous entity envisioned by some was never formed, it left its mark in the many Welsh place names that still exist, such as the village of Berwyn, in Easttown, and nearby Tredyffrin Township. The township is believed to have been incorporated in 1704, as that is the earliest date it has been found to be referred to in official records.

According to the United States Census Bureau, the township has a total area of 8.2 square miles (21 km²), of which 0.12% is water.

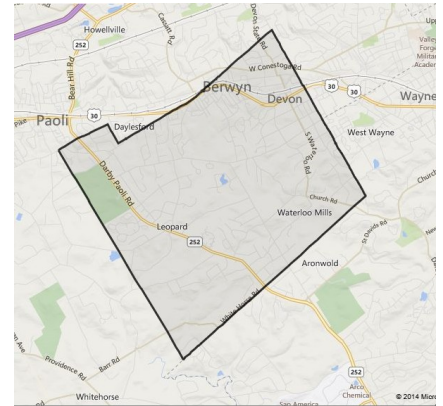
At the 2010 census, the township was 89.5% non-Hispanic White, 2.0% Black or African American, 0.1% Native American, 5.3% Asian, and 1.1% were two or more races. 2.0% of the population were of Hispanic or Latino ancestry.

As of the census of 2000, there were 10,270 people, 3,758 households, and 2,848 families residing in the township. The population density was 1,248.8 people per square mile (482.4/km²). There were 3,862 housing units at an average density of 469.6/sq mi (181.4/km²).

The racial makeup of the township was 93.77% White, 2.51% African American, 0.11% Native American, 2.78% Asian, 0.01% Pacific Islander, 0.20% from other races, and 0.61% from two or more races. Hispanic or Latino of any race were 1.08% of the population.

There were 3,758 households out of which 34.2% had children under the age of 18 living with them, 68.2% were married couples living together, 6.0% had a female householder with no husband present, and 24.2% were non-families. 20.7% of all households were made up of individuals and 10.6% had someone living alone who was 65 years of age or older. The average household size was 2.64 and the average family size was 3.08.

The median income for a household in the township was \$95,548, and the median income for a family was \$109,103. Males had a median income of \$80,341 versus \$40,955 for females. The per capita income for the township was \$51,028. About 0.7% of families and 2.7% of the population were below the poverty line, including 0.6% of those under age 18 and 3.7% of those age 65 or over.



The 8.2 square mile Easttown Township has a 2010 population of 10,477 persons.

Public & Private Schools
Comparative Enrollment 2006-10

The following data is an average of the period 2006-10 (latest available) from the American Community Survey 5-Year estimates.

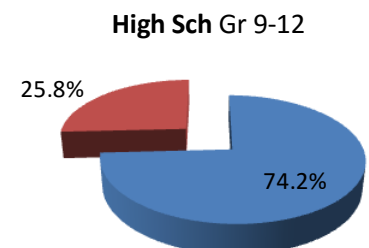
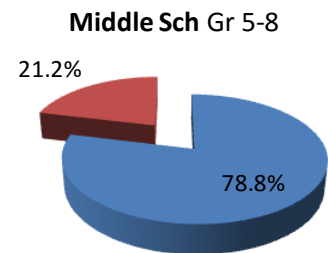
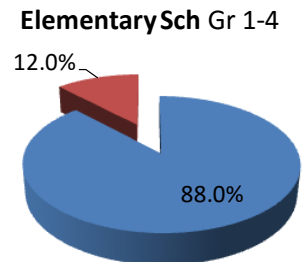
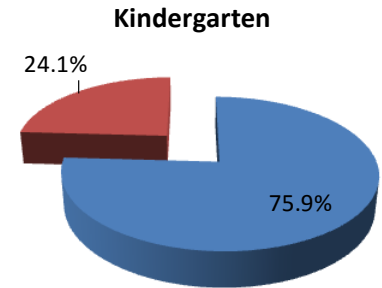
Kindergarten enrollment, was at 75.9% public, approximately 2% greater than the county and 9% less than the state.

Elementary School (Grades 1-4) at 88.0% public is **8%** more than the comparable county and 4% more than the state public school enrollment levels reflecting the known quality of the local schools.

Middle School (Grade 5-8) at 78.8% public is about **2%** less than the comparable county and 6% less than the state public school enrollments. Students are beginning to attend the many, quality Private Schools in the area.

High School (Grade 9-12) at 74.2% public is about **9%** less than the comparable county and 13% less than the state public school enrollments.

With a district-wide enrollment around 6,500 students, each 1% is the equivalent of 65 students or three (3) classrooms.



		TESD	ChesCo	Penn
Kindergarten	Public	75.9%	73.9%	85.0%
	Private	24.1%	26.1%	15.0%
Elementary Gr 1-4	Public	88.0%	80.8%	83.8%
	Private	12.0%	19.2%	16.2%
Middle Gr 5-8	Public	78.8%	80.90%	84.80%
	Private	21.2%	19.10%	15.20%
High Sch Gr 9-12	Public	74.2%	83.00%	87.00%
	Private	25.8%	17.00%	13.00%

SOURCE: American Community Survey 2006-10 found at <http://factfinder2.census.gov/faces/tableservices/jsf/pages/productview.xhtml?>





Population Growth

Comparative SD Area,
County and State

The TESD population was 39,809 persons, as of the US Census 2010.

The school district area had a population of only 11,647 in 1950 and grew 322% to the year 1990. The County grew 236% and the State grew 120% in the same period.

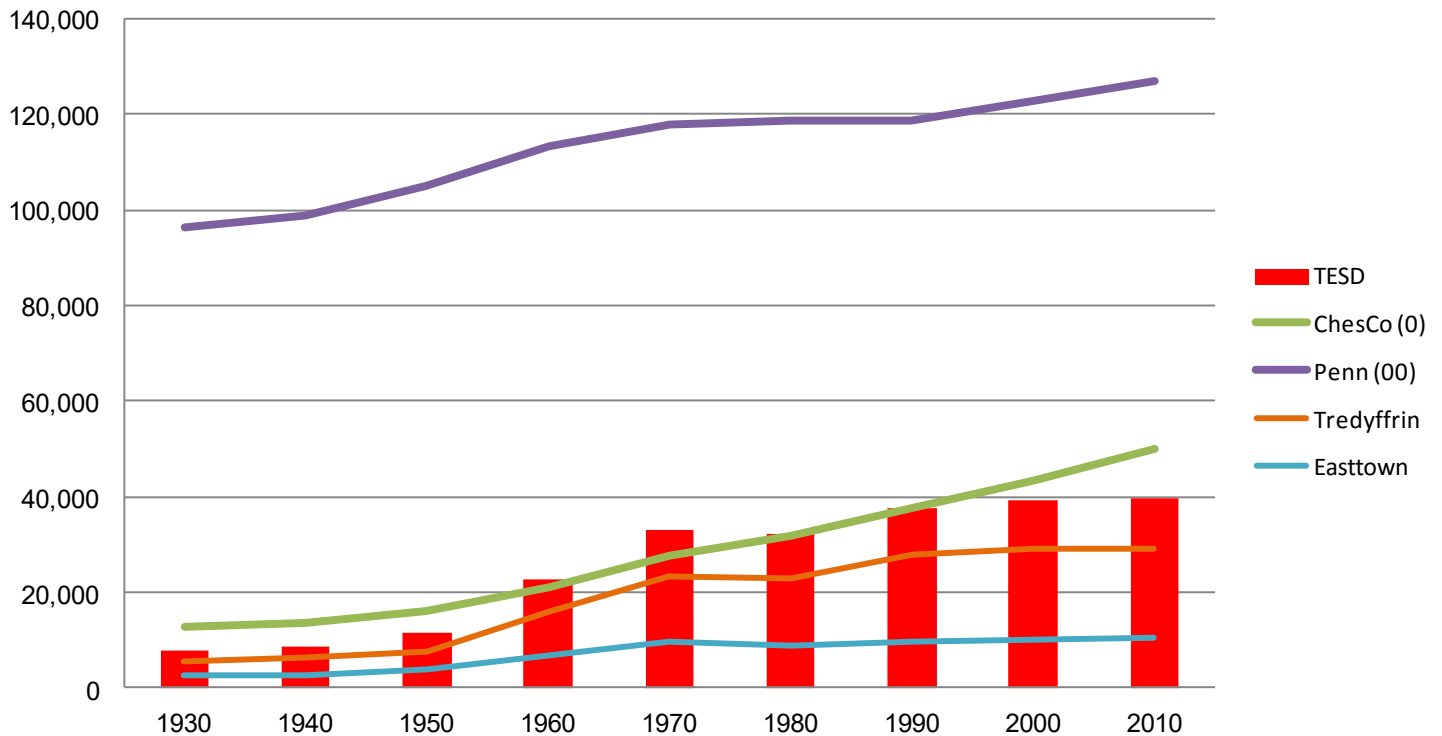
Growth between 1950 and 1990 averaged approximately 6,500 persons per decade. Growth has clearly slowed over the last 20 years, growing by 1,734 persons from 1990 to 2000, and by only 477 persons from 2000 to 2010.

The TESD population was 39,809 persons as of the US Census 2010.

1950-1970 was the largest decade of growth with over 10,660 persons every 10 years.

	1930	1940	1950	1960	1970	1980	1990	2000	2010
TESD	8,028	8,812	11,647	22,911	32,969	32,083	37,598	39,332	39,809
Chester Co	126,629	135,626	159,141	210,608	278,311	316,660	376,396	433,501	498,886
Pennsylvania	9,631,350	9,900,180	10,498,012	11,319,366	11,793,909	11,863,895	11,881,643	12,281,054	12,702,379
Tredyffrin	5,458	6,260	7,836	16,004	23,404	23,019	28,028	29,062	29,332
Easttown	2,570	2,552	3,811	6,907	9,565	9,064	9,570	10,270	10,477

Local TESD -County-State Comparative Population





2010 Population Age & Gender Pyramid

The Age & Gender Pyramid for the municipality illustrates population counts in 5 year groups with Males on the left and Females on the right.

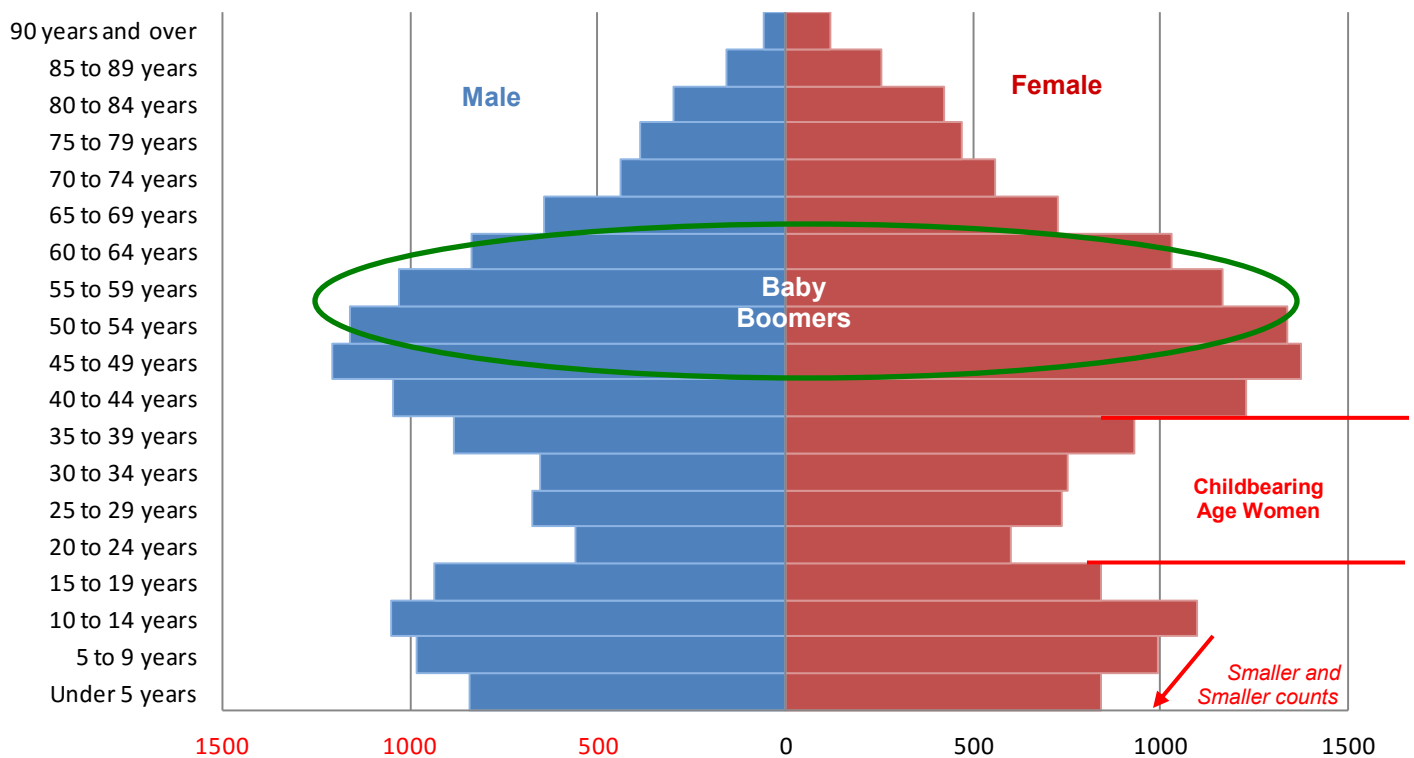
Of particular interest in school demography is the size of the prime child-bearing age groups between 20 and 39 years of age. The female counts in these groups are significantly smaller than adjacent, older age groups, ...and the adjacent, younger age groups.

Of real importance is that the Under 5 group is 293 persons smaller than the 5-9 Group which is 169 persons smaller than the 10-14 Group indication smaller elementary enrollments each year in the near future.

The under 5 age group is 293 persons less than the 5-9 age group.

And that 5-9 age group is 169 persons smaller than the 10-14 age group.

Tredyffrin: Age & Gender Pyramid





2010 Population Age & Gender Pyramid

The Age & Gender Pyramid for the municipality illustrates population counts in 5 year groups with Males on the left and Females on the right.

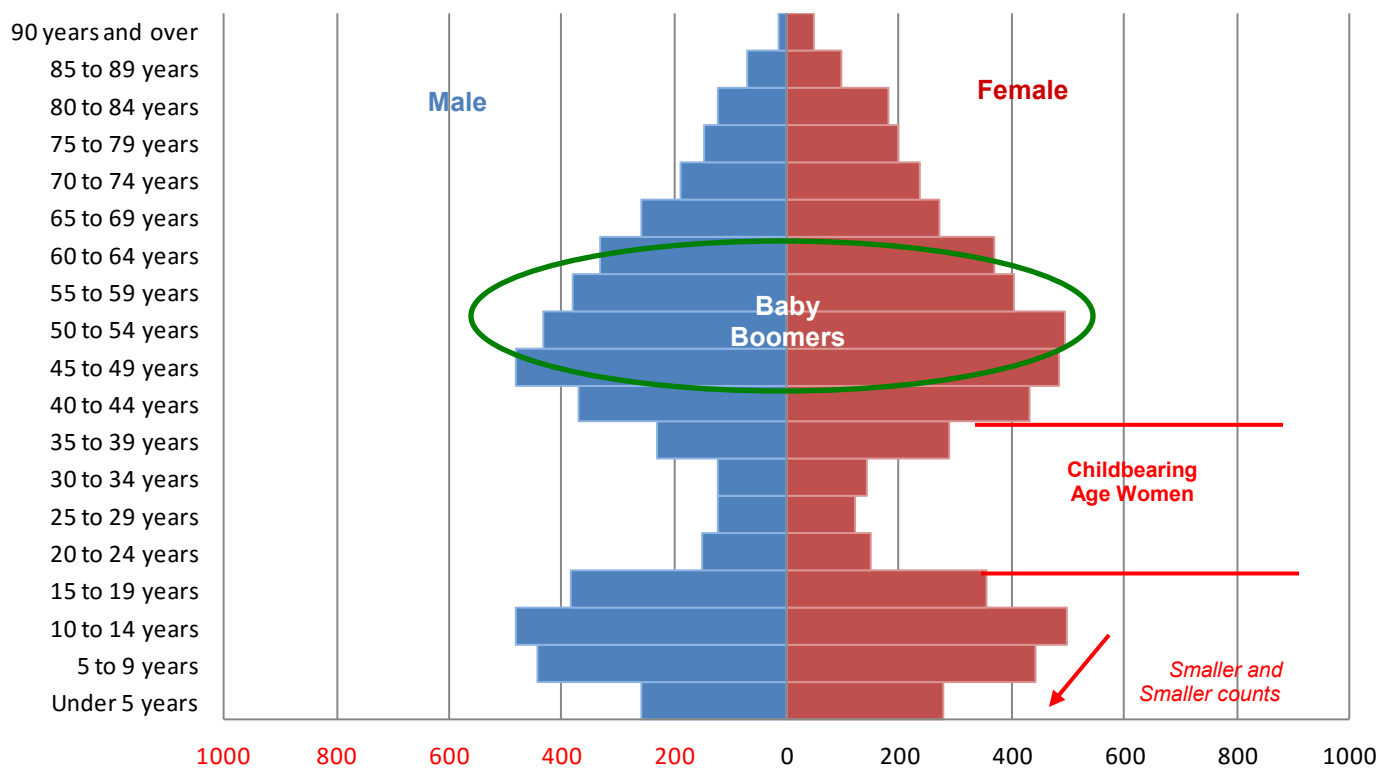
Of particular interest in school demography is the size of the prime child-bearing age groups between 20 and 39 years of age. The female counts in these groups are significantly smaller than adjacent, older age groups, ...and the adjacent, younger age groups.

Of real importance is that the Under 5 group is 325 persons smaller than the 5-9 Group which is 94 persons smaller than the 10-14 Group indication smaller elementary enrollments each year in the near future.

The under 5 age group is 325 persons less than the 5-9 age group.

And that 5-9 age group is 94 persons smaller than the 10-14 age group.

Easttown: Age & Gender Pyramid





Comparative Population by Age Groups Tredyffrin Township

Population by Age Group from 2000 to 2010 reveals significant changes in all school relevant categories due to a small population increase of only 270 persons.

Pre-School Age (0-4) decreased by 127 between 2000 and 2010.

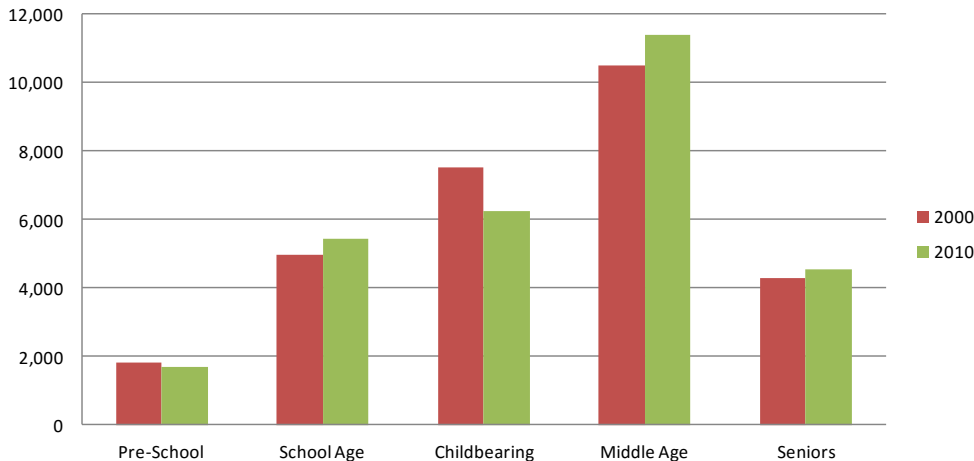
School Age (5-17) increased by 484 between 2000 and 2010.

Childbearing Age (18-39) decreased by 1,264 between 2000 and 2010 providing a potential for fewer births than in the past. *As exhibited on pages 13 and 14, Births are declining.*

Middle Age (40-64) increased by 923 between 2000 and 2010.

Seniors (65+) increased by 254 persons between 2000 and 2010.

Tredyffrin: Population by Age Group



Over the 10-year period, 2000-2010, Pre-School counts decreased, School Age populations increased, and Child-bearing Age decreased .

The decreasing Pre-School age group, supports a decreasing school enrollment, while the decrease in the Child Bearing Age group also indicates a probable continued decrease of Births and further decreases in the Pre-School group

Type	Age	2000		2010
Pre-School	0-4	1,811	-127	1,684
School Age	5-17	4,958	484	5,442
Childbearing	18-39	7,520	-1,264	6,256
Middle Age	40-64	10,498	923	11,421
Seniors	65 +	4,275	254	4,529
		29,062	270	29,332



Comparative Population by Age Groups

Easttown Township

Population by Age Group from 2000 to 2010 reveals significant changes in all school relevant categories due to a small population increase of only 207 persons. Trends were similar to those in Tredyffrin.

Pre-School Age (0-4) decreased by 102 between 2000 and 2010.

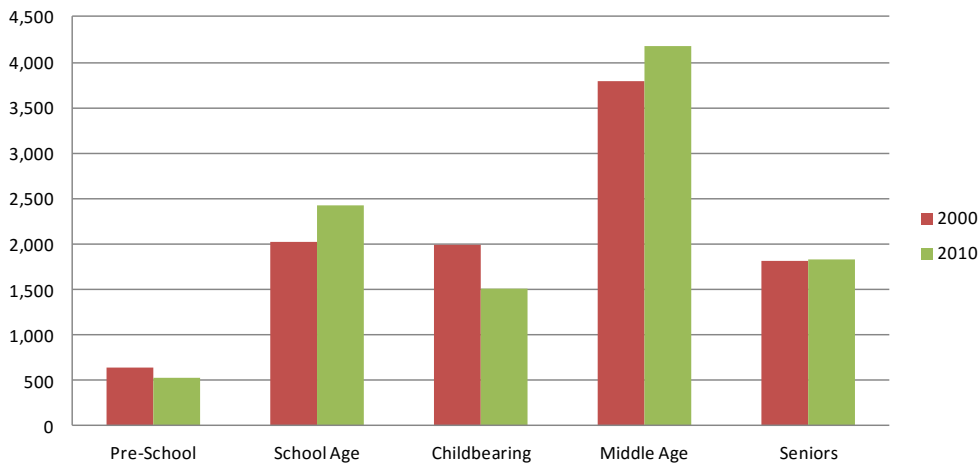
School Age (5-17) increased by 401 between 2000 and 2010.

Childbearing Age (18-39) decreased by 488 between 2000 and 2010 providing a potential for fewer births than in the past. *As exhibited on pages 13 and 14, Births are declining.*

Middle Age (40-64) increased by 383 between 2000 and 2010.

Seniors (65+) increased by 13 persons between 2000 and 2010.

Easttown: Population by Age Group



Over the 10-year period, 2000-2010, Pre-School counts decreased, School Age populations increased, while Childbearing Age decreased.

The decreasing Pre-School age group, and stable School Age group supports a decreasing school enrollment, while the decrease in the Child Bearing Age group also indicates a probable continued decrease of Births and further decreases in the Pre-School group

Age	2000		2010
Pre-School 0-4	636	-102	534
School Age 5-17	2,024	401	2,425
Childbearing 18-39	1,998	-488	1,510
Middle Age 40-64	3,791	383	4,174
Seniors 65 +	1,821	13	1,834
	10,270	207	10,477



District Annual Births Calendar Year

The number of babies born to families who reside in the district is a significant factor effecting enrollments. Birth counts from “5 years earlier” are used for the “Birth to Kindergarten” Survival Ratios in the standard Cohort Survival projection method. They are the starting point for all cohorts.

Live Births in the area municipalities have been declining since year 2006 with a high of 444 Births, and a year 2010 low of 322 Births. The 6-year trend, is perhaps more indicative of recent levels of birth. The 6-year trend is for about 4 fewer births every year.

However births could easily turn around and increase with an improved economy. It is for that reason that **the Cohort Survival methodology is based on averages**. The 6-year average is from the same years as the 6-years of historic enrollments that is the basis of the Cohort Survival projection used in this study. The 6-year average is 348 births per year.

It is noteworthy that the recent 6-year average of 348 births is 64 births, about three classrooms per year, less than the prior 4-year average of 412 births.

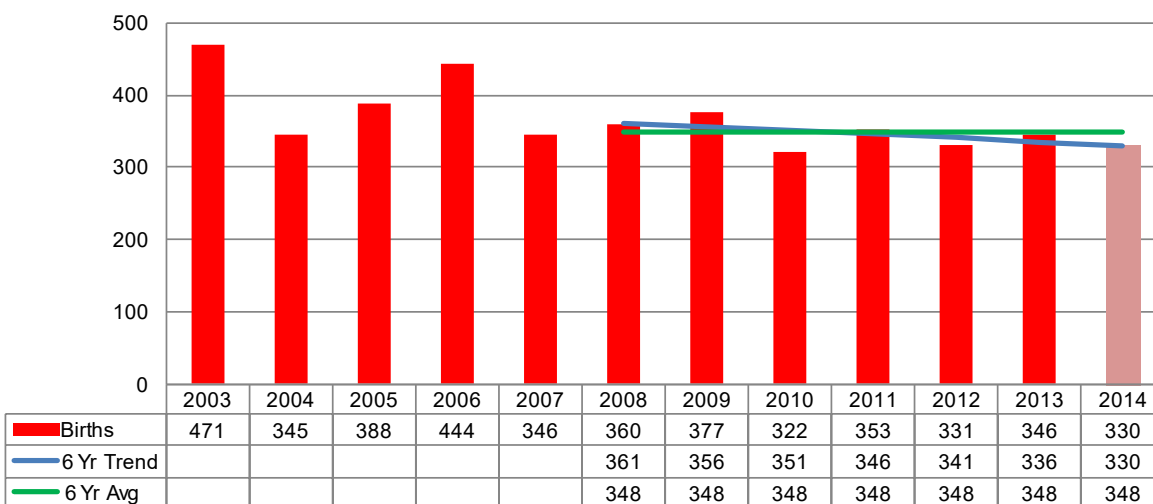
Births are not available for year 2014 and forward, however data for Live Births through year 2018 are used in the 10-year projection. The recent 6-year average of 348 may be used for those years. However in this report, the data for monthly births has been collated as School Year Births, as described on page 15, and that 6-year average of 340 is used in this report.

Births have been averaging 348 per year for the last 6 years paralleling the last 6 years of historic enrollment data on which the projection is based.

The 6-year trend is for about 4 less births per year. However births could easily turn around and increase with an improved economy.

It is for that reason that the Cohort Survival methodology is based on averages.

TESD Combined Live Births





Municipal Annual Births

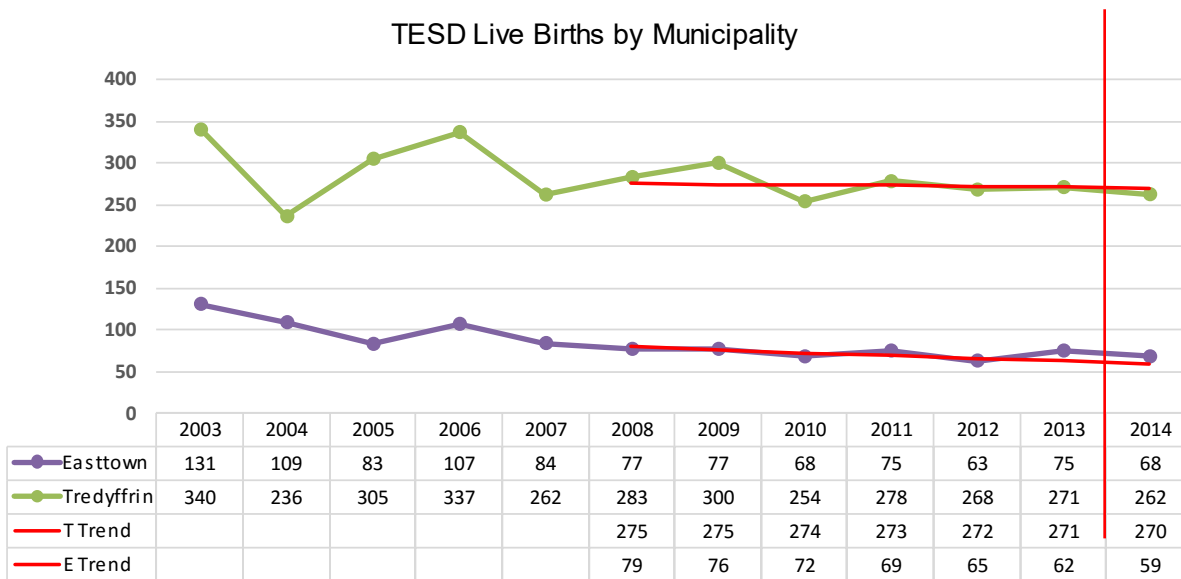
Live Births in each contributing municipality are provided below. Live Births are generally trending lower in both municipalities.

The 6-Year Trend in Tredyffrin Township is for 1 less Birth per year.

The 6-Year Trend in Easttown Township is for 3+ less Births per year.

Births have been decreasing in both municipalities.

TESD Live Births by Municipality



The year 2010 Birth Rate in Tredyffrin is 8.6 per thousand population.

The year 2010 Birth Rate in Easttown is 6.4 per thousand population.

These are both significantly less than the Chester County Birth Rate at 11.0 and Pennsylvania Commonwealth at 11.2.

Source: Pa Dept. of Health at http://www.portal.state.pa.us/portal/server.pt/community/health_statistics_and_research/11599



District Births by School Year (Sept 1-Sept 1)

The Births to Kindergarten Survival Ratio is more accurate if the Sept 1 cut-off for entry into Kindergarten at 5 years of age is recognized. This is the data set used for “Births 5 Years Earlier” in the projection.

The 6-year average is from the same school years as the 6-years of historic enrollments that is the basis of the Cohort Survival projection used in this study. The 6-year average is 340 births per year.

It is noteworthy that the recent 6-year average of 340 births is 55 births, two plus classrooms per year, less than the prior 3-year average of 395 births.

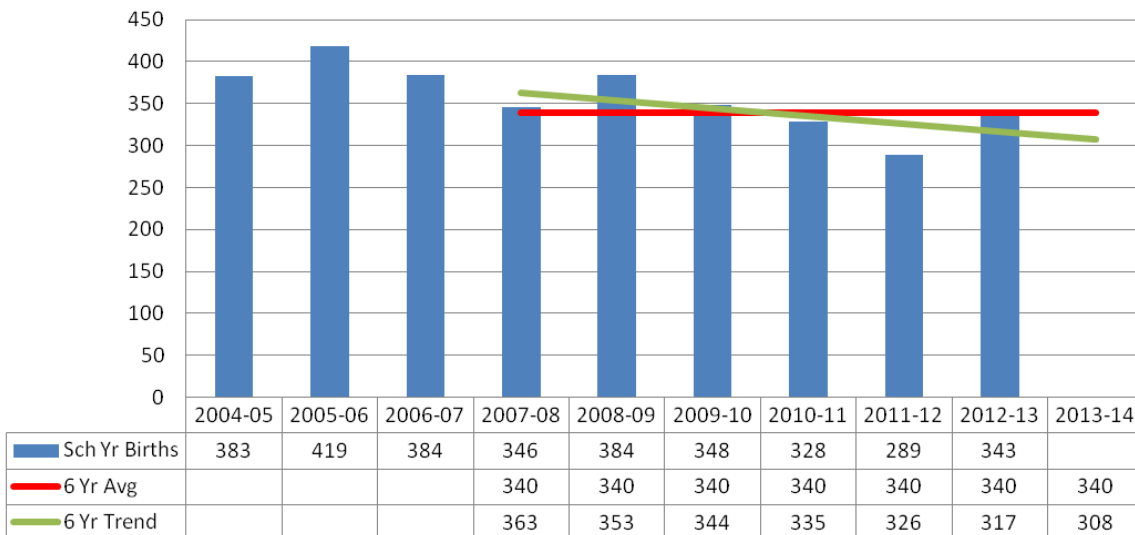
Births are not available for school year 2013-14 and forward, however data for Live Births through school year 2024-25 are used in the 10-year projection. The recent 6-year average of 340 is used for those years.

Births have been averaging 340 per year for the last 6 school years paralleling the last 6 years of historic enrollment data on which the projection is based.

The 6-year trend is for about 9 less births per year. However births could easily turn around and increase with an improved economy.

It is for that reason that the Cohort Survival methodology is based on averages.

School Year Births



Source: Pa Dept. of Health at http://www.portal.state.pa.us/portal/server.pt/community/health_statistics_and_research/11599



Residential Permitting for New Construction

Recession Levels

A Building Permit is obtained by a developer after approval of a major sub-division, and when construction of a “next phase” of residential units is eminent. Residential permits may also be for construction by an owner of a single house along an existing roadway. Residential Building Permits are often correlated with population growth in a community. Significantly, there is less development in the District in recent years.

The recent 6-year average of Residential Permits in years 2008 to 2013 is 15.3 units per year. The 4-year average Residential Permits in years 2009 to 2012 is 10 units per year. Year 2012, a low point in permitting, yielded only 7 single-family permits. Year 2013 and 2014 permitting increased significantly to 27 and 26 units, respectively.

All permitting in the last 10 years has been for single-family housing. No Multi-family housing was built recently.

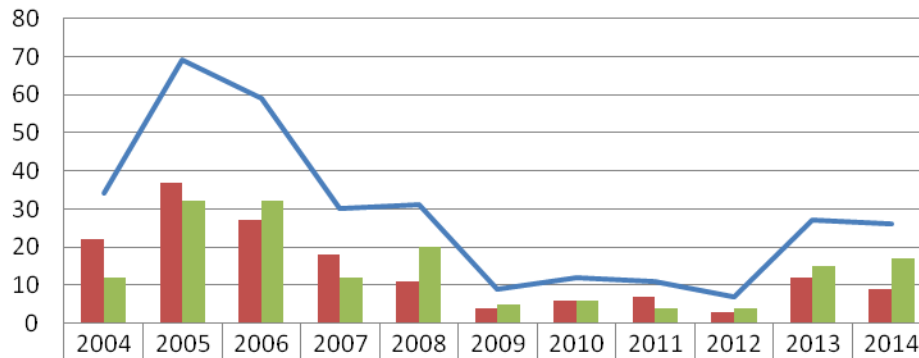
As with the nation, residential development in the District has been depressed for several years. While the southeastern PA economy is reported to be in recovery, it is anticipated to recover slower than the rest of the nation. A genuine housing recovery is at least one year away. The rate of residential construction in the future in the district should be carefully monitored for an expected recovery.

Residential permitting peaked at 69 units in 2005.

The recent 6-year annual average (2008-2013) of residential units is just 15.3 units per year.

The lowest permitting level was 7 units in 2009.

Residential Permits



Easttown	22	37	27	18	11	4	6	7	3	12	9
Tredyffrin	12	32	32	12	20	5	6	4	4	15	17
Combined	34	69	59	30	31	9	12	11	7	27	26

SOURCE: <http://socds.huduser.org/permits/index.html>



Proposed Residential Construction

Five residential construction projects are in the approval process and likely to be approved, with construction and occupancy within the time period of the 5-year projection. These include;

Wayne Glenn, 750 Walker Rd.

104 Multi-family units including 52) 2-Bedroom and 3-Bedroom Townhouses, and 52) Two-Bedroom and 3-Bedroom Carriage Houses.
Attendance: New Eagle ES, Valley Forge MS

Residential construction is anticipated to include 399 Multi-family units over the three-year period 2015-17.

Village Square, 23-45 So. Valley Rd.

10) 2-Bedroom and 20) 3--Bedroom, 3-story Townhouses.
Attendance: Beaumont ES, Tredyffrin-Easttown MS

Chesterbrook V, 500 Chesterbrook Boulevard

128) 3-Bedroom Townhouses.
Attendance: New Eagle ES, Valley Forge MS

Devon Yard, 500 Rt. 30 at Devon Rd.

125) 1 and 2 Bedroom rental apartments
Attendance: Devon ES, Tredyffrin-Easttown MS

Grey Court, 1067 Lancaster Ave.

12) 3-Bedroom Townhouses.
Attendance: New Eagle ES, Valley Forge MS



Proposed Residential Development

WG - Wayne Glenn
VS - Village Square
Ch - Chesterbrook
DY - Devon Yard
GC - Grey Court



New Students from New Construction

To estimate the number of School Age Children (SAC), the SAC “multipliers” are applied to the number of units. After determination of the number of School Age Children, they are scheduled for entry into the school system based upon the Developer’s construction schedule.

The source for the multipliers is ***Who Lives in Pennsylvania Housing, a Quick Guide to Pennsylvania Residential Demographic Multipliers*** by the Center for Urban Policy Research of the Edward J. Bloustein School of Planning and Public Policy at Rutgers, The State University of New Jersey, as developed from the 2000 U. S. Census.

Four different multipliers are used in this study for each Type of housing (Townhouses and Carriage Houses¹) and number of Bedrooms. The Carriage Houses, true single-family attached designs, use Multipliers extrapolated from 50% Single-family and 50% Townhouse.

The Developers are targeting sales in all three developments to older, empty nesters, and the units are priced above the average, in the \$400,000 to \$600,000 range. However, they are not Age-Restricted.

The units by year and type are as follows;

Future Housing				2015	2016	2017	2018	2019	Total
Type	Bdrms	Unit Count							
Wayne Glen	TH	2 Bdrm	16		6	10			
	TH	3 Bdrm	36		16	20			
	Carriage	2 Bdrm	16		6	10			
	Carriage	3 Bdrm	36		16	20			
			104		44	60			104
Chesterbrook V	TH f	3 Bdrm	68		34	34			
	TH r	3 Bdrm	60		30	30			
			128		64	64			128
Village Square	TH	2 Bdrm	10		5	5			
	TH	3 Bdrm	20		10	10			
			30		15	15			30
Devon Yard	Rental Apt	1 Bdrm	50				50		
	Rental Apt	2 Bdrm	75				75		
			125				125		125
Grey Court	TH	3 Brdm	12		12				
			12		12				12
			399		135	139	125		399



Three developments will generate 399 units of multi-family housing during the period of the projection.

A total of 399 units will be occupied over the 3-year period, 2016-18

1– A Carriage House is defined as a 50ft wide, single family, attached unit with a ground floor Master Bedroom suite



All New Students from New Construction

Application of the SAC multipliers for unit types determines that 393 units over three years will generate 75+ School Age Children.

ALL School Age Children

	Type	Bdrms	SAC/ Unit	2015	2016	2017	2018	2019	Total	
Wayne Glen	TH	2 Bdrm	0.06		0.36	0.60				
	TH	3 Bdrm	0.21		3.36	4.20				
	Carriage*	2 Bdrm	0.15		0.90	1.50				
	Carriage*	3 Bdrm	0.36		5.76	7.20				
					10.38	13.50			23.88	New Eagle VFMS
Chesterbrook V	TH f	3 Bdrm	0.21		7.14	7.14				
	TH r	3 Bdrm	0.21		6.30	6.30				
					13.44	13.44			26.88	New Eagle VFMS Sum
									50.76	
Village Square	TH	2 Bdrm	0.06		0.30	0.30				
	TH	3 Bdrm	0.21		2.10	2.10				
					2.40	2.40			4.80	Beaumont ES TEMS
Devon Yard	Rental Apt	1 Bdrm	0.04				2.00			
	Rental Apt	2 Bdrm	0.21				15.75			
							17.75		17.75	Devon TEMS
Grey Court	TH	3 Bdrm	0.21		2.52					
					2.52				2.52	Beaumont ES
									25.07	TEMS Sum
					28.74	29.34	17.75		75.83	

However, not all of the School Age Children will attend public school. The count for Public Schools is on the next page.

Five developments will generate 75+ public school age children during the period of the projection.



All Public School Students from New Construction

Application of the SAC multipliers for unit types determines that 399 units over three years will generate 873 persons of which 75+ are School Age Children.

However, not all of the School Age Children will attend public school. Use of "Public SAC" Multipliers generates 70 students.

Future Public School Age Children

										Total Persons	
	Type	Bdrms	PSAC/ Unit	2015	2016	2017	2018	2019	Total	Persons/ Unit	Total Persons
Wayne Glen	TH	2 Bdrm	0.05		0.30	0.50				1.86	29.76
	TH	3 Bdrm	0.19		3.04	3.80				2.47	88.92
	Carriage*	2 Bdrm	0.15		0.90	1.50				2.02	32.24
	Carriage*	3 Bdrm	0.36		5.76	7.20				2.71	97.56
					10.00	13.00			23.00		248.48
Chesterbrook V	TH f	3 Bdrm	0.19		6.46	6.46				2.47	167.96
	TH r	3 Bdrm	0.19		5.70	5.70				2.47	148.20
					12.16	12.16			24.32		316.16
								47.32			
Village Square	TH	2 Bdrm	0.05		0.25	0.25				1.86	18.60
	TH	3 Bdrm	0.19		1.90	1.90				2.47	49.40
					2.15	2.15			4.30		68.00
Devon Yard	Rental Apt	1 Bdrm	0.04				2.00			1.26	63.00
	Rental Apt	2 Bdrm	0.19				14.25			1.97	147.75
							16.25		16.25		210.75
Grey Court	TH	3 Brdm	0.21		2.52					2.47	29.64
					2.52				2.52		29.64
								23.07			
											873.03
				26.83	27.31	16.25			70.39		

In year 2016, 27 students will be added across all 13 grade levels (about 2 per grade). Similarly, 27 are added in 2016, and 16 in year 2017, for a cumulative total of 70 new students.

Five developments will generate 70 public school age children during the period of the projection.

Attendance Area Impact:

In addition to a District-wide projection, this study also provides School-level projections. For that purpose, it is imperative that students from new housing that are added to the standard projection, be added in the correct school according to geographic boundaries for individual schools.

Wayne Glenn impacts the New Eagle Elementary School and the Valley Forge Middle School. **Chesterbrook V** impacts the New Eagle Elementary School (by revised policy) and the Valley Forge Middle School.

Both **Village Square** and **Grey Court** impact enrollments at the Beaumont Elementary School and the Tredyffrin-Easttown Middle School.

Devon Yard impacts enrollments at the Devon Elementary School and the Tredyffrin-Easttown Middle School.



Cohort Survival Methodology Mathematical Analysis

Cohort Survival is the name given to the method of projecting enrollments which is recommended by the Pennsylvania Department of Education. The most important terms, concepts and methodology are illustrated herein.

Cohort Survival projections are based on historic enrollment and birth data in the individual school district and incorporate six years of demographic data. They are considered very reliable where trends are expected to continue, without significant change in housing or birth rates.

Cohort is the name given to the common groups of children originally born in a given year and progressing, together, through the school system, one grade level to the next.

Survival Ratios refer to the number of students from one year and grade level who “survive to” or enter the next grade level the following year.

For example, in the sample partial table in the side bar, historic enrollments show 444 students in 1st Grade in year 2009-10, following a 417 student Kindergarten in year 2008-09. This yields a Kindergarten to First Grade **Survival Ratio** of 1.065 (or $444 \div 417$). Another expression of the Survival Ratio would be that 106% of the Kindergarten students “survived” to 1st Grade.

Similar calculations are made for “survival” from Births Five Years Earlier to Kindergarten, and for each and every grade level transition in each and every year of historical enrollments which are used. In general, six years of historic data will yield five Survival Ratios for each grade level change, Birth to K, K to 1, 1 to 2, etc.

The **Average Survival Ratio** is then calculated for each grade level change. In the side-bar example 1.041 is the 6-year average Kindergarten to Grade 1 ratio and 1.027 is the 6-year Grade 1 to Grade 2 Survival Ratio.

The sample projections use the current school year 2011-12 enrollments, at the bottom of the Historic chart, as a base year. The Averaged Cohort Survival Ratios are applied to those base year enrollments and to the actual and estimated births, and projected into the next year, one grade level higher.

In the side-bar example 416 Kindergarten students in 2012-13 survive at a rate of 1.041 as a 2013-14 First Grade of 433 students. This similar projection is made across all grade levels for a 5-year period. Finally, the individual grade level enrollment projections are summed across each year to determine district-wide enrollments in that year.

Enrollment projections have been made using the Cohort Survival method.

Historic Enrollments

School Year	Births 5 Yrs. Ago	"s"	K "s"	1st Gr. "s"	2nd Gr. "s"
HISTORIC DATA					
2006-07	273	1,469	401	418	427
2007-08	296	1,405	416	409	432
2008-09	275	1,516	417	432	415
2009-10	289	1,339	387	444	441
2010-11	296	1,284	380	401	453
2011-12	293	1,307	383	398	420
Average Survival Rate		1.387	1.041	1.027	

Projected Enrollments

5-YR PROJECTIONS			
2012-13	300	1,387	416
2013-14	288	1,387	399
2014-15	240	1,387	433
2015-16	217	1,387	416
2016-17	272	1,387	416
6 Yr Avg			399
			433
			410
			445
			427
			356



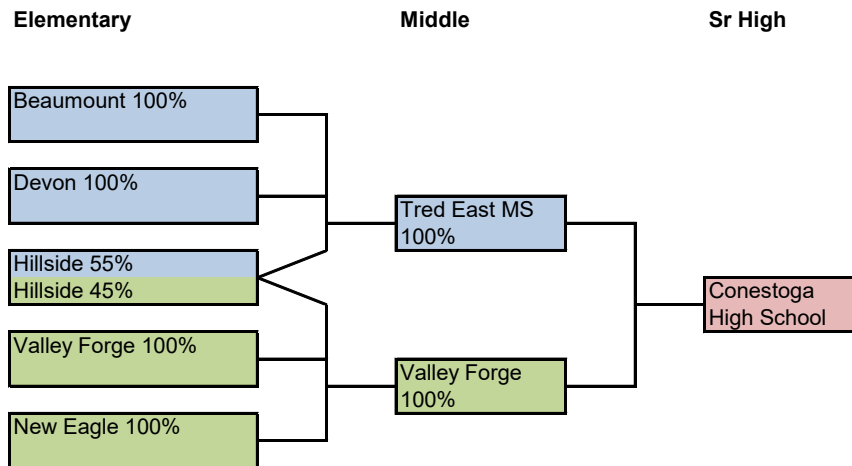
Cohort Survival Methodology

Adjustments to Standard Methods

Since the study also provides school level projections, it is important to define the feeder system from elementary school to middle school and middle school to high school.

That feeder system includes students from Hillside Elementary School split 55% to Tredyffrin-Easttown Middle School and 45% to Valley Forge Middle School.

This is not as much an adjustment to method as it is to distribution.



The Hillside Elementary School enrollment split to middle schools was addressed in the school level projections.

No adjustments were made for impact of private/parochial school closures, changes in Charter enrollment or changes in Out-of-District placement which are anticipated to continue within existing trends.

Adjustments were made to the standard Cohort Survival projection method for the **impact of the new Multi-family housing**. This is accomplished as an overlay to the standard projection.

In each year, the number of students from new housing is distributed equally across all grades and added to the standard projection (cohort) for the grade. In the subsequent years it is “survived” at the standard rates for that cohort.

Adjustments were made to the **Birth to Kindergarten Survival Ratio**. The Survival Ratio of the last three years only at 1.036 is used. The standard 6-year Survival Ratio of a lower 1.009 is not used. The use of the 3-year B:K S/R results in approximately 9 additional Kindergarten students each year,...and subsequent grade levels.

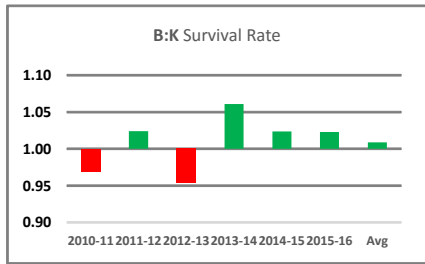
School Year	Births 5 Yrs. Ago	"s"	K "s"	1st Gr. "s"	2nd Gr. "s"
5-YR PROJECTIONS PLUS NEW HOUSING					
	+ Resid		1	1	1
2015-16	322	1.027	332	489	472
			1.241	1.040	
	+ Resid		2	2	2
2016-17	353	1.027	365	414	511
			1.241	1.040	
	+ Resid		1	1	1
2017-18	331	1.027	341	453	432
			1.241	1.040	
	+ Resid		0	0	0
2018-19	348	1.027	358	423	472
			1.241	1.040	
	+ Resid		0	0	0
2019-20	348	1.027	358	444	440

Adjustments were made for the impact of students from new housing...and for the Birth to Kindergarten Survival Ratio.



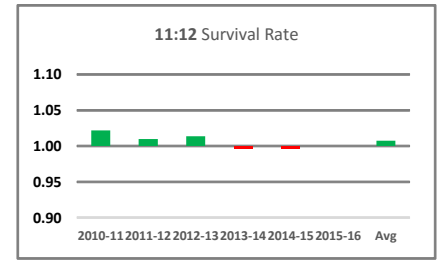
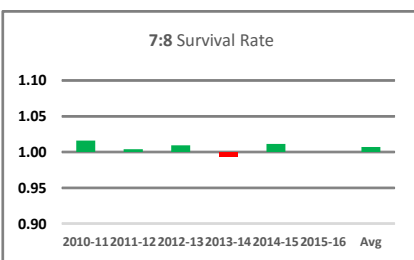
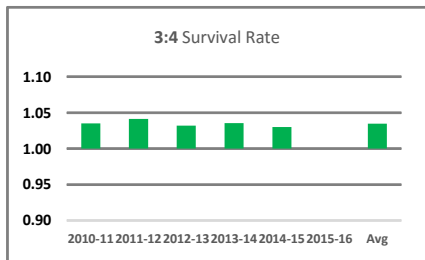
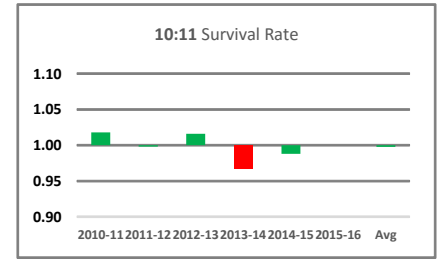
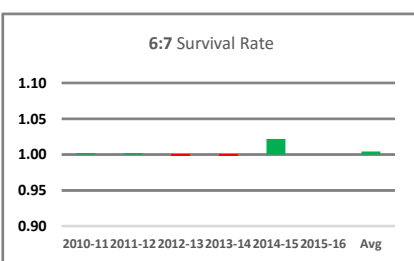
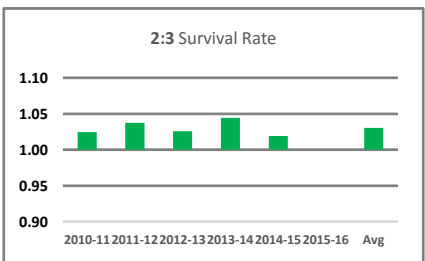
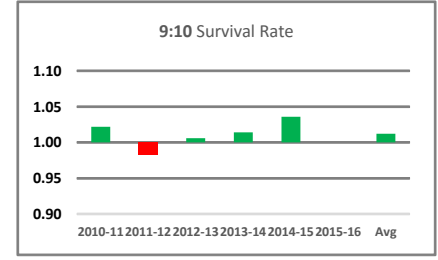
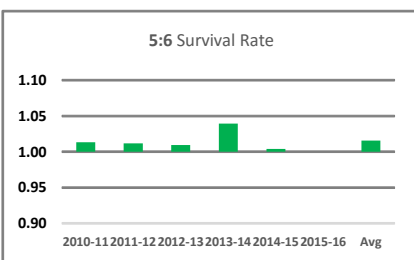
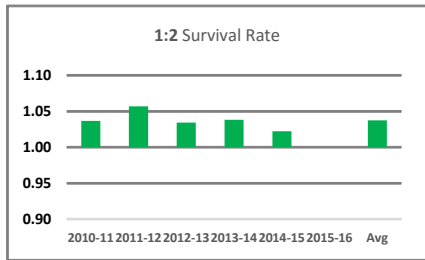
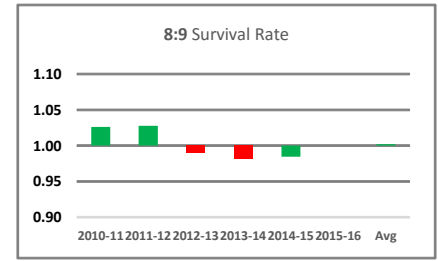
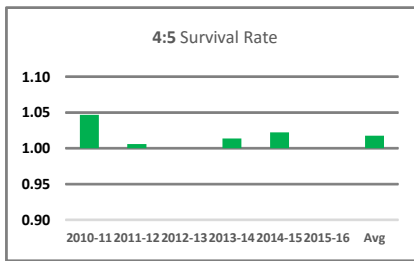
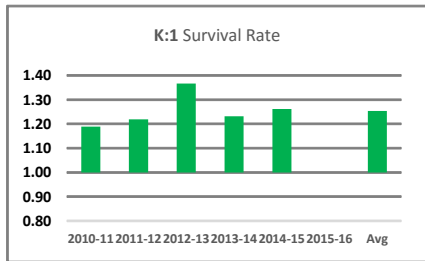
Cohort Survival Methodology

Cohort Survival Ratios by Grades



The Birth to Kindergarten CS/R is the most volatile of CS/R's and the only one with two significant <1 ratios.

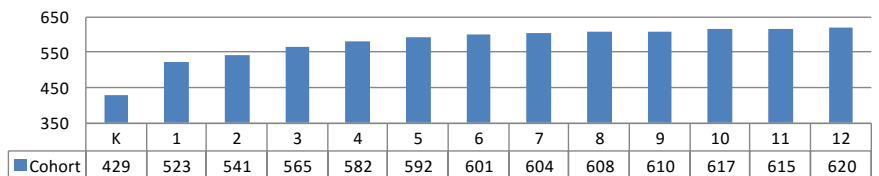
Grade 8 to 9 and Grades 10 to 11 both have two less significant <1 ratios.



The Grade Level Survival Ratios tell the story of increasing cohort size.

The largest 429 student Kindergarten cohort of year 2011 is projected to be 620 12th Grade students in year 2022.

Cohort Growth



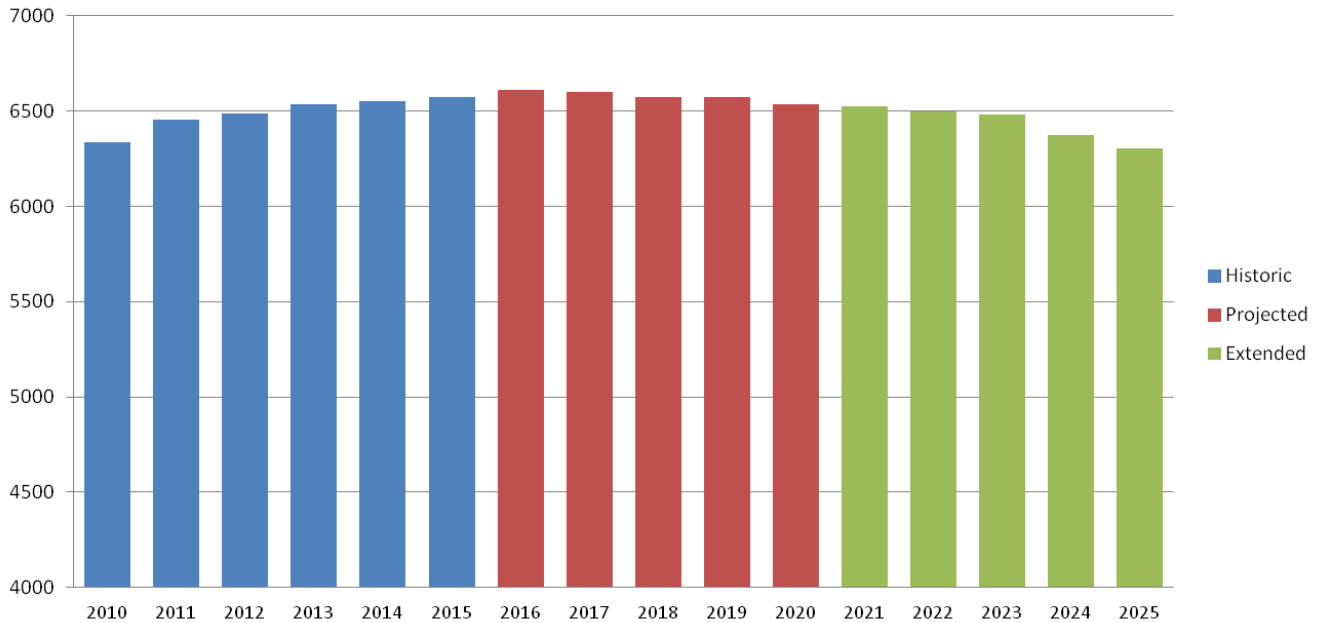
District-Wide Enrollment

During the historic period, district-wide enrollments were increasing from a starting low of 6,334 in year 2010 to 6,575 students in 2015.

The historic period ended 241 students (3.8%) more than at the start.

The District averaged 6,491 students in the historic period, and will average 6,579 in the projection period and 6,437 in the extended projection period.

District Wide Enrollments K-12



During the projected period, enrollments will start the period with a high of 6,611 students in year 2016, and then decrease to 6,534 students.

During the extended projection period, enrollments will decrease by 228 students to a year 2025 period end of 6,307 students which is 27 fewer students than at the start of the historic period.

	TOTAL	Average	Change	%Chg
Historic	2010	6,334		
	2011	6,457		
	2012	6,487		
	2013	6,537	6,491	
	2014	6,553		
	2015	6,575		241 3.8%
Projected	2016	6,611		
	2017	6,603		
	2018	6,576	6,579	
	2019	6,572		
	2020	6,534		-41 -0.6%
Extended	2021	6,524		
	2022	6,497		
	2023	6,481	6,437	
	2024	6,376		
	2025	6,307		-228 -3.5%

70 students from new housing are added to the District Projection or 5.3 students per grade level.



Elementary Schools

Kindergarten-Grade 4

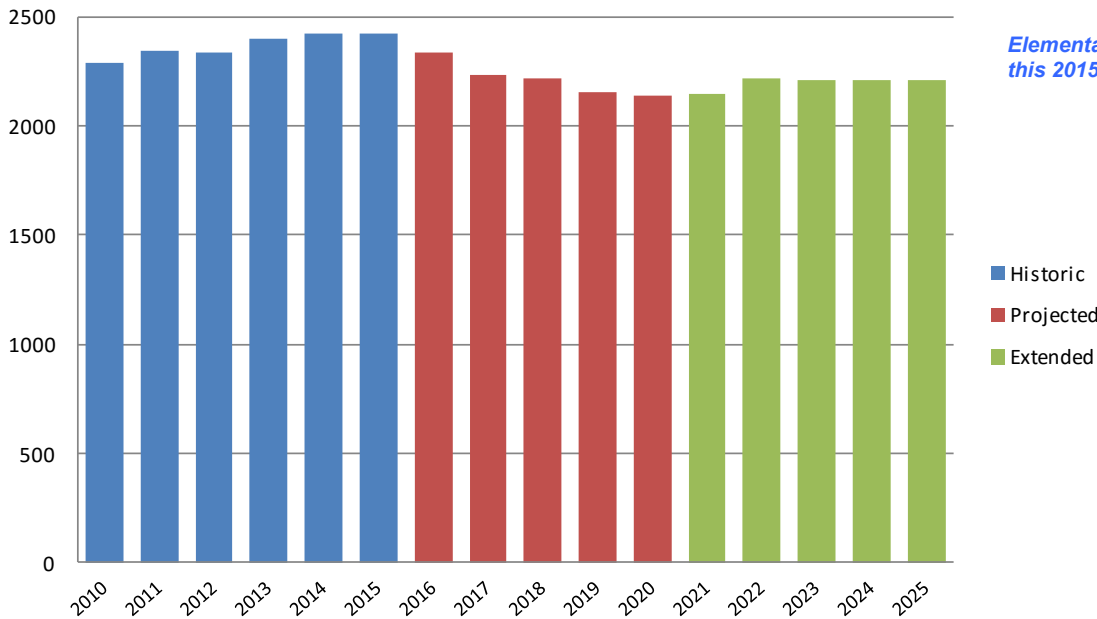
Elementary level students are educated in five Grade K to 4 Elementary Schools. Historic Grades K to 4 enrollments increased from a low of 2,292 to a high of 2,425 students at the end of the historic period.

K-Grade 4 enrollments decrease to a low of 2,139 students in 2020 at the end of the projection period. Enrollment stabilizes in the extended projection period ending at 2,209 students in 2025.

Projected enrollments are less than historic levels in both 5-year periods.

Elementary level enrollments averaged 2,370 students in the historic period, will average 2,215 students in the projection period, and will average 2,198 students in the extended projection period.

Elementary K-Gr 4 Enrollments



Elementary enrollments are peaking in this 2015-16 school year

A year-to-year breakdown by grade level is as follows;

	Year	K	1	2	3	4	K-4 TOTAL	Period	
								Average	Change
Historic	2010	371	465	451	511	494	2,292		
	2011	429	441	482	462	529	2,343		
	2012	366	523	466	500	481	2,336		
	2013	367	500	541	478	516	2,402	2,370	
	2014	393	452	519	565	495	2,424		
	2015	356	496	462	529	582	2,425		133
Projected	2016	342	448	517	478	549	2,334		5.8%
	2017	301	431	467	534	497	2,230		
	2018	356	379	448	483	554	2,220	2,215	
	2019	352	447	393	461	499	2,153		
	2020	352	441	464	405	478	2,139		-286
Extended	2021	352	441	458	478	419	2,147		-12.2%
	2022	352	441	458	471	494	2,216		
	2023	352	441	458	471	488	2,209	2,198	
	2024	352	441	458	471	488	2,209		
	2025	352	441	458	471	488	2,209		70

27 students from new housing are added to the elementary level projection.

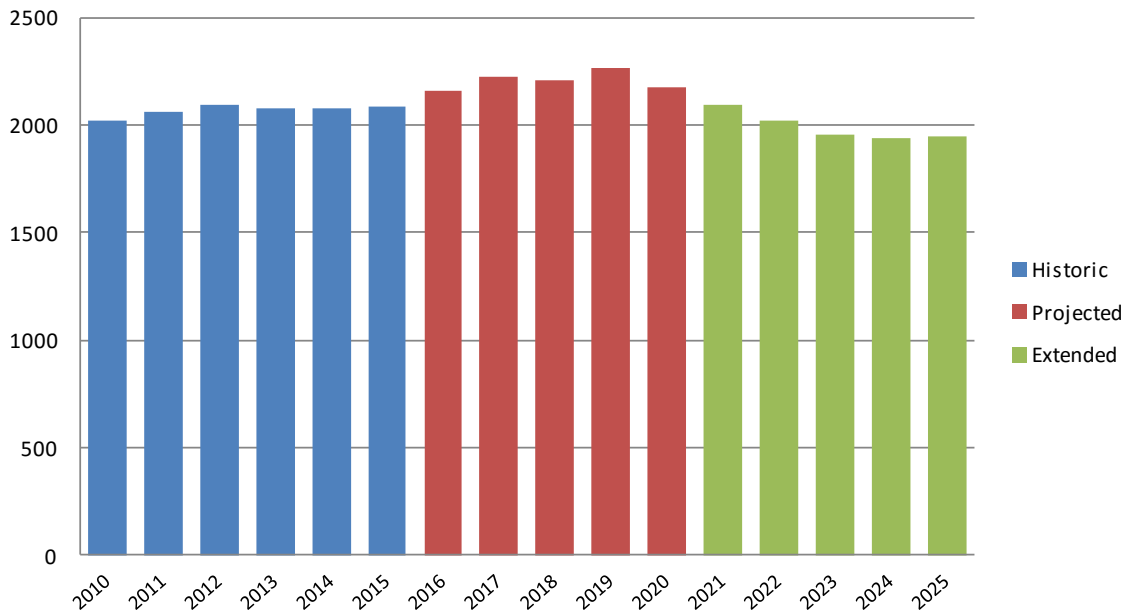


Middle School Grades 5-8

Middle school students attend two schools serving Grades 5 to 8. During the historic period, middle school enrollments increased by 59 students to a period high of 2,084.

Middle School enrollments will peak in the 2019-20 school year.

Middle School Gr 5-8 Enrollments



During the projected period, enrollments increase to a high of 2,266 students, ending the period 91 students higher than the end of the historic period. During the extended projection period, enrollments will decrease to a low of 1,941 students in year 2024.

A year-to-year breakdown by grade level is as follows;

	Year	Gr 5-8				TOTAL	Period Average	Period Change
		5	6	7	8			
Historic	2010	528	501	499	497	2,025		
	2011	517	535	502	507	2,061		
	2012	532	523	536	504	2,095		
	2013	481	537	522	541	2,081	2071	
	2014	523	500	536	519	2,078		
	2015	506	525	511	542	2,084		59
Projected	2016	594	516	529	517	2,156		2.9%
	2017	561	606	520	535	2,222		
	2018	507	571	610	525	2,213	2207	
	2019	564	515	574	614	2,266		
	2020	508	573	517	578	2,175		91
Extended	2021	486	516	575	520	2,098		4.2%
	2022	427	493	518	579	2,018		
	2023	503	433	496	522	1,954	1992	
	2024	496	511	435	499	1,941		
	2025	496	504	513	438	1,952		-224

Middle School enrollments which averaged 2,071 students in the historic period, will increase to an average of 2,207 students in the projection period, before decreasing to an average of 1,992 students in the extended projection period.

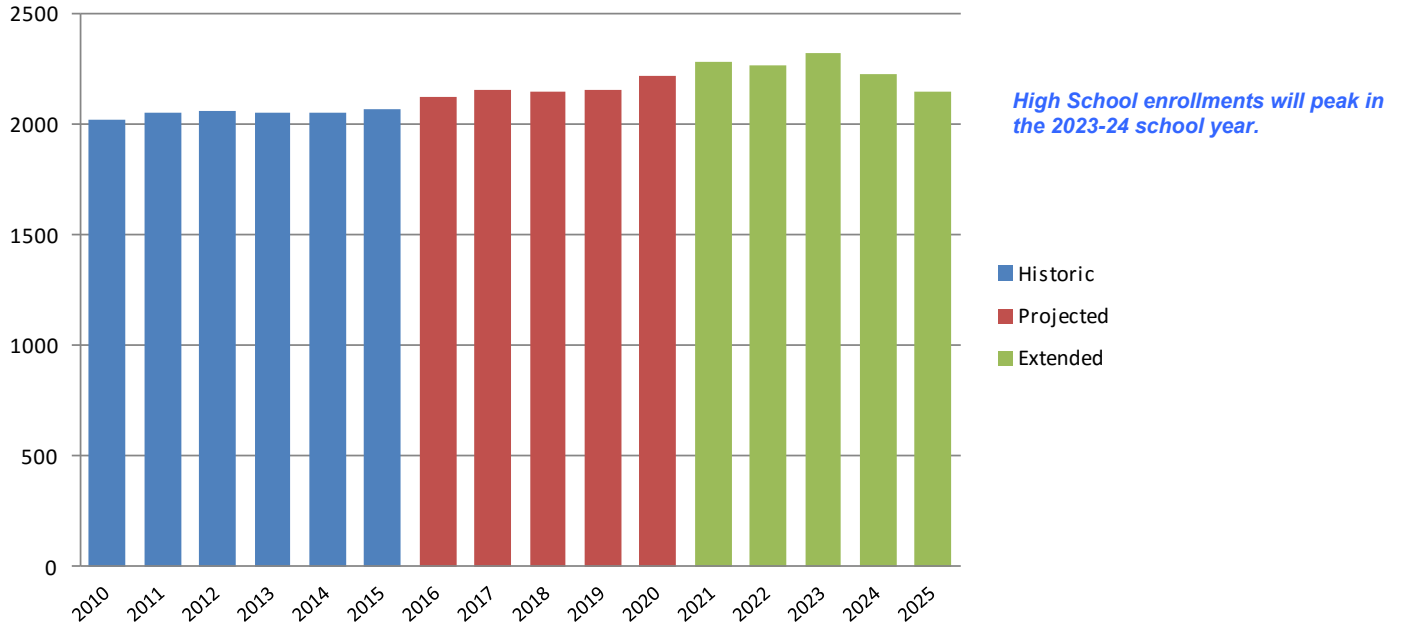
21 students from new housing are added to the middle school level projection.



High School Enrollment Grade 9-12

High School students are educated in a single traditional school for Grades 9 to 12. During the historic period, high school enrollments increased slightly, from 2,017 to 2,066 students, ending the period with an increase of 49 students.

Conestoga High School Grade 9-12 Enrollments



During the projected period, enrollments increase to 2,220 students in 2020, a 154 student increase over the end of the historic period.

During the extended projection period enrollments will peak at 2,318 students in year 2023, 98 students more than at the end of the projection period, and then decrease to 2,146 students in 2025.

A year-to-year breakdown by grade level is as follows;

	9	10	11	12	Gr 9-12 TOTAL	Period Average	Period Change
Historic	2010	505	505	502	505	2,017	
	2011	510	516	514	513	2,053	
	2012	521	501	515	519	2,056	
	2013	499	524	509	522	2,054	2050
	2014	531	506	507	507	2,051	
	2015	511	550	500	505	2,066	49
Projected	2016	545	519	551	506	2,121	
	2017	520	554	520	557	2,150	
	2018	537	527	554	525	2,143	2158
	2019	526	544	526	558	2,154	
	2020	615	532	543	530	2,220	154
Extended	2021	579	622	531	547	2,279	
	2022	521	586	621	535	2,263	
	2023	580	528	584	625	2,318	2246
	2024	523	587	526	589	2,225	
	2025	500	529	586	530	2,146	-74

High School enrollments which averaged 2,050 students in the historic period, will average 2,158 students in the projection period, before increasing to an average of 2,246 students in the extended projection period.

22 students from new housing are added to the high school level projection.



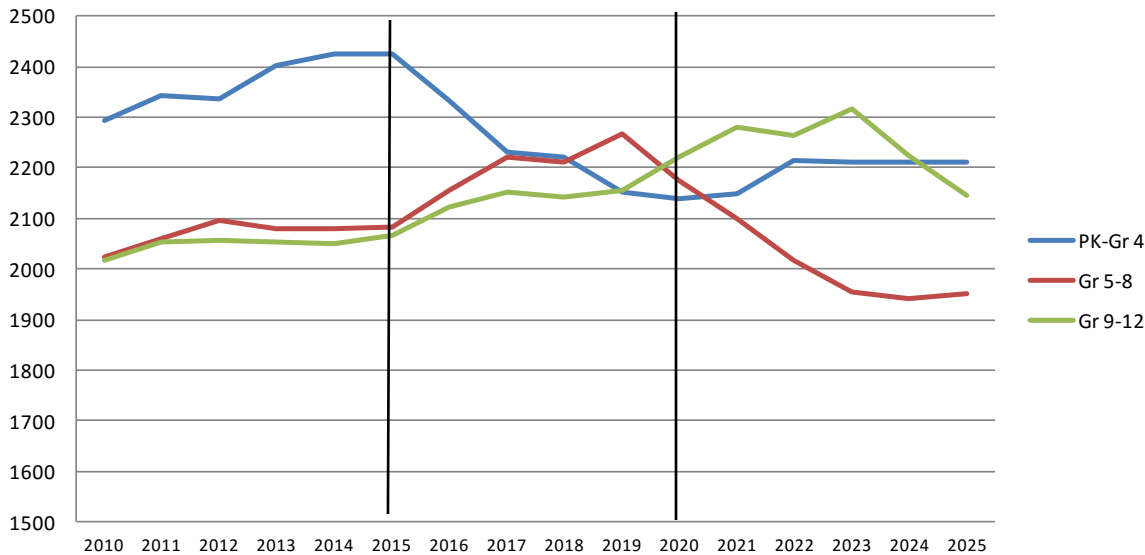
Comparative Enrollments by Grade Level Organization

Grade K-4 enrollments were at a high point at the end of the historic period at 2,424 students in 2014 and will decrease to a low point of 2,187 students in year 2019 at the end of the projection period.

Grades 6-8 enrollments were at a low of 1,976 students in the beginning of the historic period, will increase to a high of 2,272 students at the end of the projection period, before decreasing to a low of 1,988 in the extended period.

Grades 9-12 High School enrollments were at a low of 1,992 students at the beginning of the historic period, and will increase to a high of 2,329 students at the end of the extended projection period.

Comparative Enrollments by Grade Level Organization



		K-4	Gr 5-8	Gr 9-12	TOTAL
Historic	2010	2292	2025	2017	6334
	2011	2343	2061	2053	6457
	2012	2336	2095	2056	6487
	2013	2402	2081	2054	6537
	2014	2424	2078	2051	6553
	2015	2425	2084	2066	6575
Projected	2016	2334	2156	2121	6611
	2017	2230	2222	2150	6603
	2018	2220	2213	2143	6576
	2019	2153	2266	2154	6572
	2020	2139	2175	2220	6534
	Extended	2021	2147	2098	2279
2022		2216	2018	2263	6497
2023		2209	1954	2318	6481
2024		2209	1941	2225	6376
2025		2209	1952	2146	6307

■ HIGH
■ LOW

Grades K-4 peaked at the end of the historic enrollment period.

Grades 5-8 will peak near the end of the projection period.

Grades 9-12 will peak in the middle of the extended projection period.



Elementary Enrollments Beaumont ES

K to Grade 4 enrollments at the Beaumont Elementary School have been generally decreasing. The low point in 2014 is 50 students less than the 2010 period start of 438 students. The historic period averages 418 students.

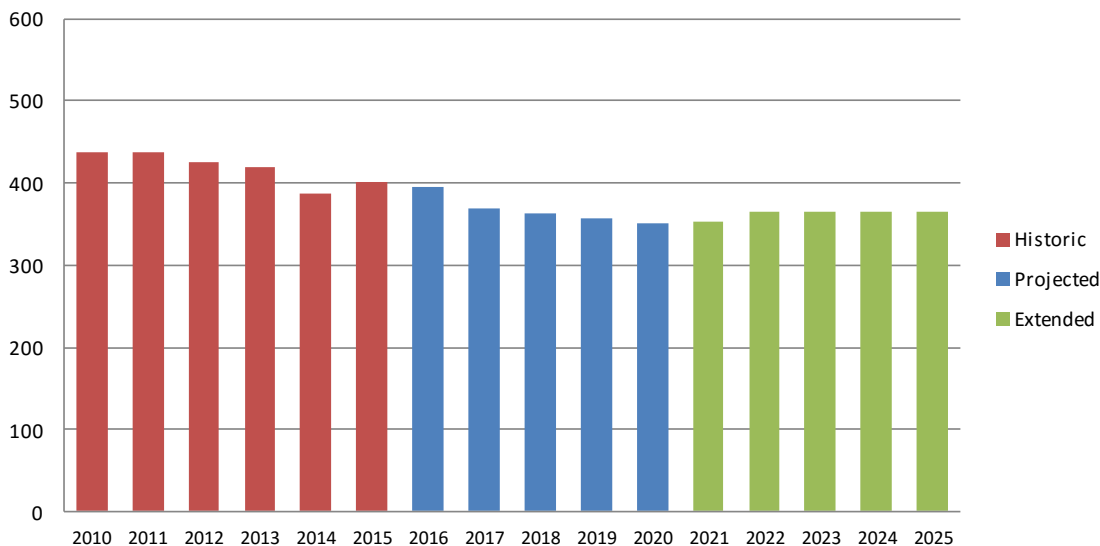
Enrollment in the projected period averages 367 students and decreases by 49 students.

Enrollments in the extended projection stabilize, and the period averages 362 students.

After decreasing in the historic period, enrollments will continue to decrease in the projection period before stabilizing in the extended projection period.

This school level projection was adjusted by 3 new students from new housing.

Beaumont ES Enrollment by Year



A year-to-year breakdown by grade level is as follows;

		K	1	2	3	4	TOTAL	Average	Change
Historic	2010	61	84	89	103	101	438		
	2011	66	73	91	93	114	437		
	2012	66	83	81	96	99	425		
	2013	64	92	81	77	105	419	418	
	2014	54	72	98	85	79	388		
	2015	59	76	79	96	91	401		-37 -8.4%
Projected	2016	55	76	81	81	103	396		
	2017	48	70	81	83	87	368		
	2018	57	61	74	82	89	363	367	
	2019	56	72	65	76	88	357		
	2020	56	72	77	66	81	352		-49 -12.4%
Extended	2021	56	72	76	78	71	353		
	2022	56	72	76	77	84	365		
	2023	56	72	76	77	83	364	362	
	2024	56	72	76	77	83	364		
	2025	56	72	76	77	83	364		13 3.6%

Enrollments peaked in the 2010-11 school year.



Elementary Enrollments Devon ES

K to Grade 4 enrollments at the Devon Elementary School have been increasing. The peak in 2014 is 55 students higher than the 2009 period low point of 522 students. The historic period averages 538 students.

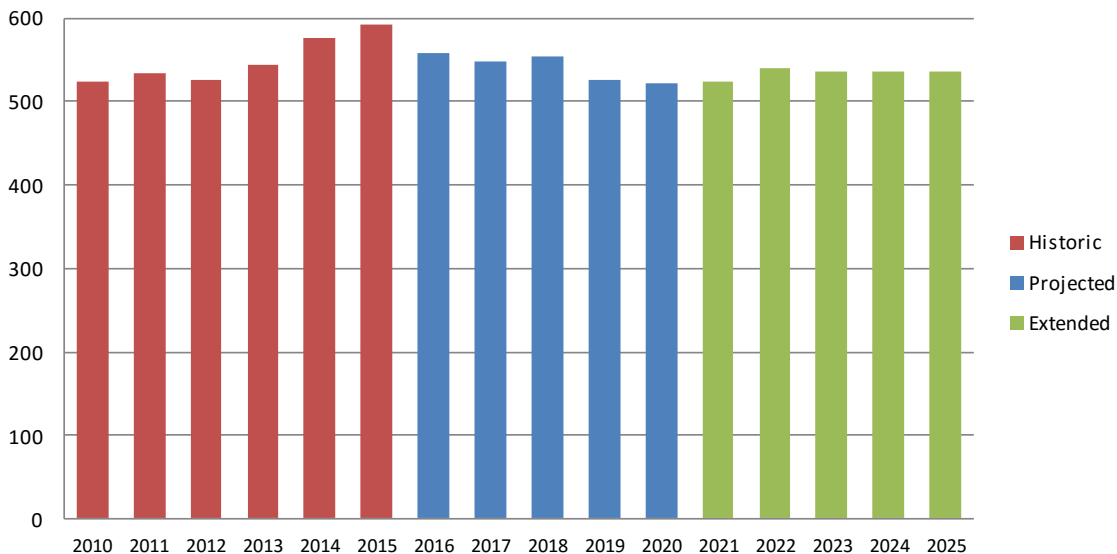
Enrollment in the projected period averages 542 students and decreases by 65 students to a low of 512 students.

Enrollments in the extended projection stabilize, and the period averages 523 students.

After increasing in the historic period, enrollments will decrease in the projection period before stabilizing in the extended projection period.

This school level projection was adjusted by 6 new students from new housing.

Devon ES Enrollment by Year



A year-to-year breakdown by grade level is as follows;

		K	1	2	3	4	TOTAL	Average	Change
Historic	2010	88	115	96	120	105	524		
	2011	117	94	114	91	119	535		
	2012	74	139	100	117	96	526		
	2013	87	98	144	99	116	544	550	
	2014	102	110	109	154	102	577		
	2015	90	133	112	110	147	592		68
Projected	2016	85	111	139	113	111	558		13.0%
	2017	75	104	116	140	113	548		
	2018	90	93	110	118	142	554	541	
	2019	88	111	97	111	118	525		
	2020	88	108	115	98	112	521		-71
	Extended	2021	88	108	113	116	99	524	
2022		88	108	113	114	117	539		
2023		88	108	113	114	114	537	535	
2024		88	108	113	114	114	537		
2025		88	108	113	114	114	537		16

Enrollments will have peaked in this 2015-16 school year.

Elementary Enrollments Hillside ES

In the historic period, **K to Grade 4** enrollments at the Hillside Elementary School have been increasing. The peak in 2014 is 37 students higher than the 2009 period start of 435 students. The historic period averages 456 students.

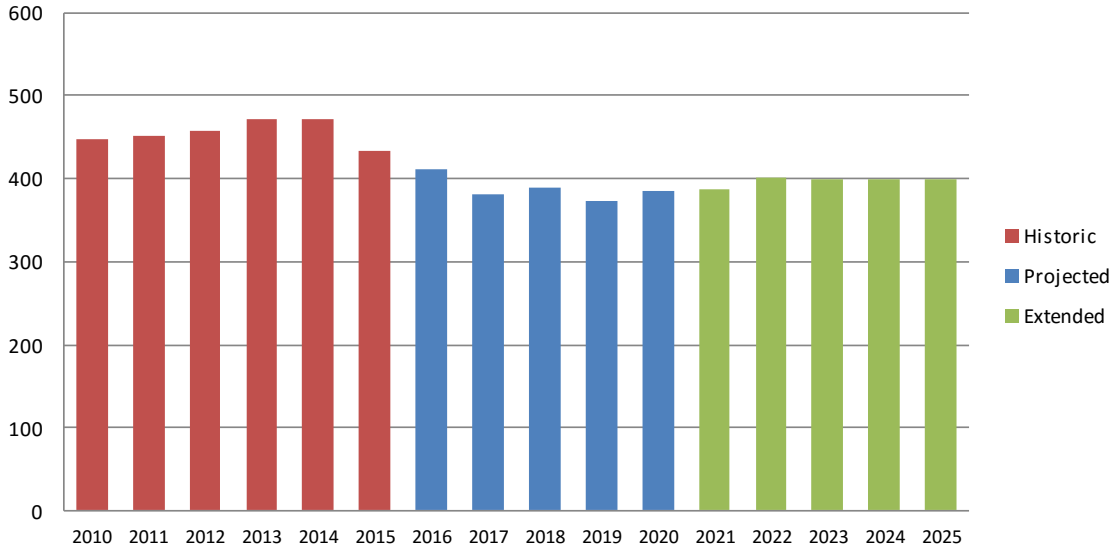
Enrollment in the projected period averages 440 students and decreases by 50 students.

Enrollments in the extended projection stabilize, and the period averages 431 students.

After increasing slightly in the historic period, enrollments will decrease in the projection period before stabilizing in the extended projection period.

No students are added from new housing.

Hillside ES Enrollment by Year



A year-to-year breakdown by grade level is as follows;

		K	1	2	3	4	TOTAL	Average	Change
Historic	2010	83	76	84	103	102	448		
	2011	78	105	81	85	102	451		
	2012	81	95	108	86	88	458		
	2013	72	103	101	108	87	471	456	
	2014	86	78	101	99	108	472		
	2015	59	96	73	102	104	434		-14 -3.1%
Projected	2016	66	70	97	74	104	411		
	2017	58	78	71	99	75	381		
	2018	69	69	79	72	100	390	388	
	2019	68	82	70	80	73	374		
	2020	68	81	83	71	82	385		-49 -11.9%
Extended	2021	68	81	82	84	72	388		
	2022	68	81	82	83	86	401		
	2023	68	81	82	83	85	400	398	
	2024	68	81	82	83	85	400		
	2025	68	81	82	83	85	400		15 3.7%

Enrollments peaked in the 2014-15 school year.



Elementary Enrollments

New Eagle ES

In the historic period, **K to Grade 4** enrollments at the New Eagle Elementary School have been relatively stable. The peak in 2015 is 3 students higher than the 2010 period beginning of 437 students. The historic period averages 430 students.

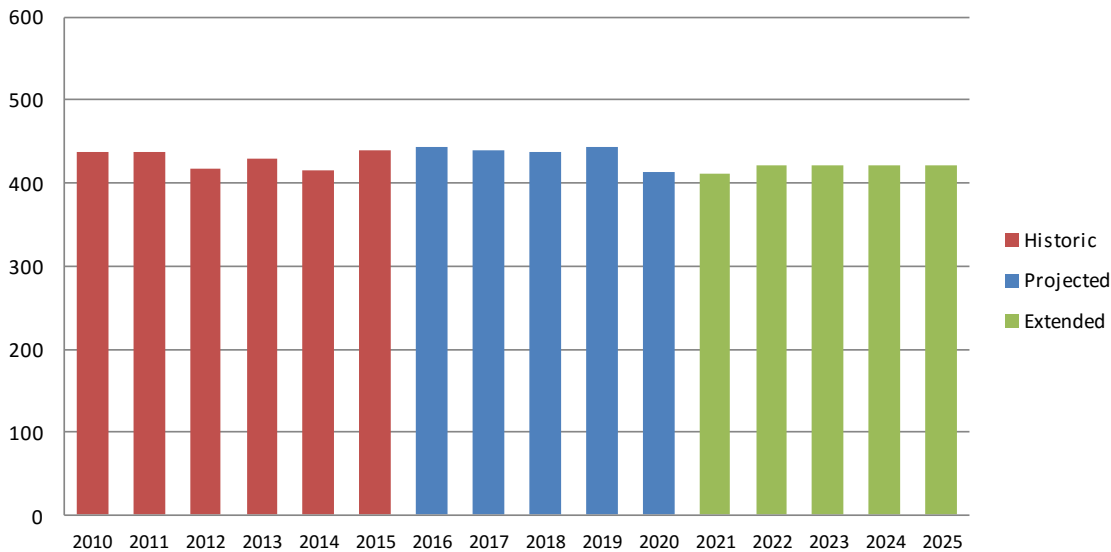
Enrollment in the stable projected period averages 436 students and only decreases by 27 students in 2020 at the end of the period.

Enrollments in the extended projection are stable, and the period averages 420 students.

After a decreasing historic period, enrollments will continue to decrease in the projection period before stabilizing in the extended projection period.

This school level projection includes 20 students from new housing.

New Eagle ES Enrollment by Year



A year-to-year breakdown by grade level is as follows;

		K	1	2	3	4	TOTAL	Average	Change
Historic	2010	64	88	91	100	94	437		
	2011	71	82	86	95	104	438		
	2012	62	91	84	86	95	418		
	2013	64	92	98	89	86	429	430	
	2014	56	80	92	99	88	415		
	2015	83	77	85	94	101	440		3 0.7%
Projected	2016	64	113	81	89	97	444		
	2017	57	88	118	85	92	440		
	2018	65	76	90	121	86	438	436	
	2019	64	87	78	93	122	444		
	2020	64	86	89	80	93	413		-27 -6.0%
	Extended	2021	64	86	88	92	81	412	
2022		64	86	88	91	93	422		
2023		64	86	88	91	92	421	420	
2024		64	86	88	91	92	421		
2025		64	86	88	91	92	421		8 2.0%

Enrollments peak twice in the very stable projection period.



Elementary Enrollments Valley Forge ES

K to Grade 4 enrollments at the Valley Forge Elementary School have been increasing. The peak in 2014 is 127 students higher than the 2009 period start of 445 students. The historic period averages 518 students.

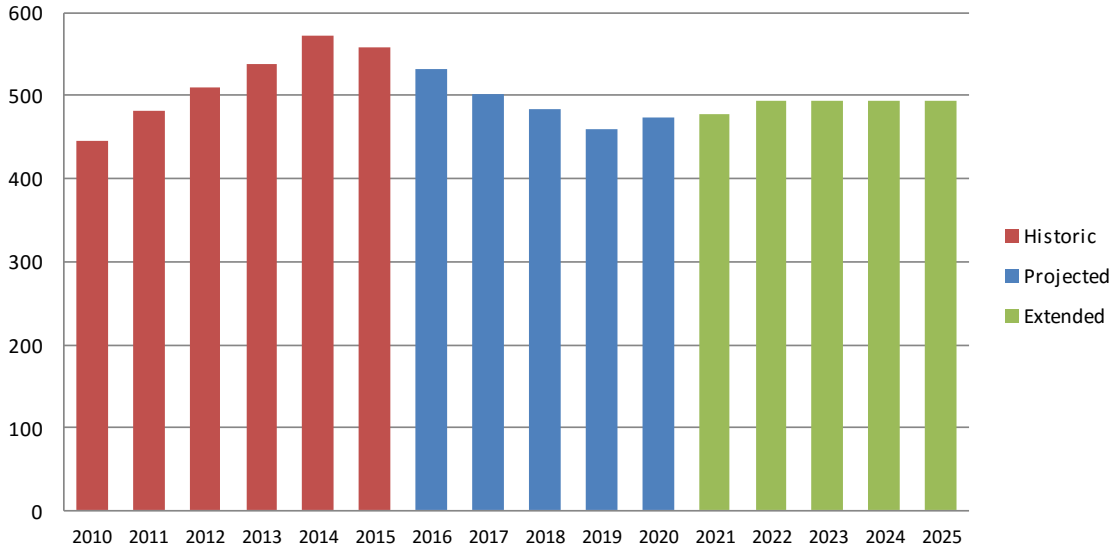
Enrollment in the projected period averages 491 students and decreases by 84 students.

Enrollments in the extended projection stabilize, and the period averages 490 students.

After increasing in the historic period, enrollments will decrease in the projection period before stabilizing in the extended projection period.

This school level projection does not include any students from new housing.

Valley Forge ES Enrollment by Year



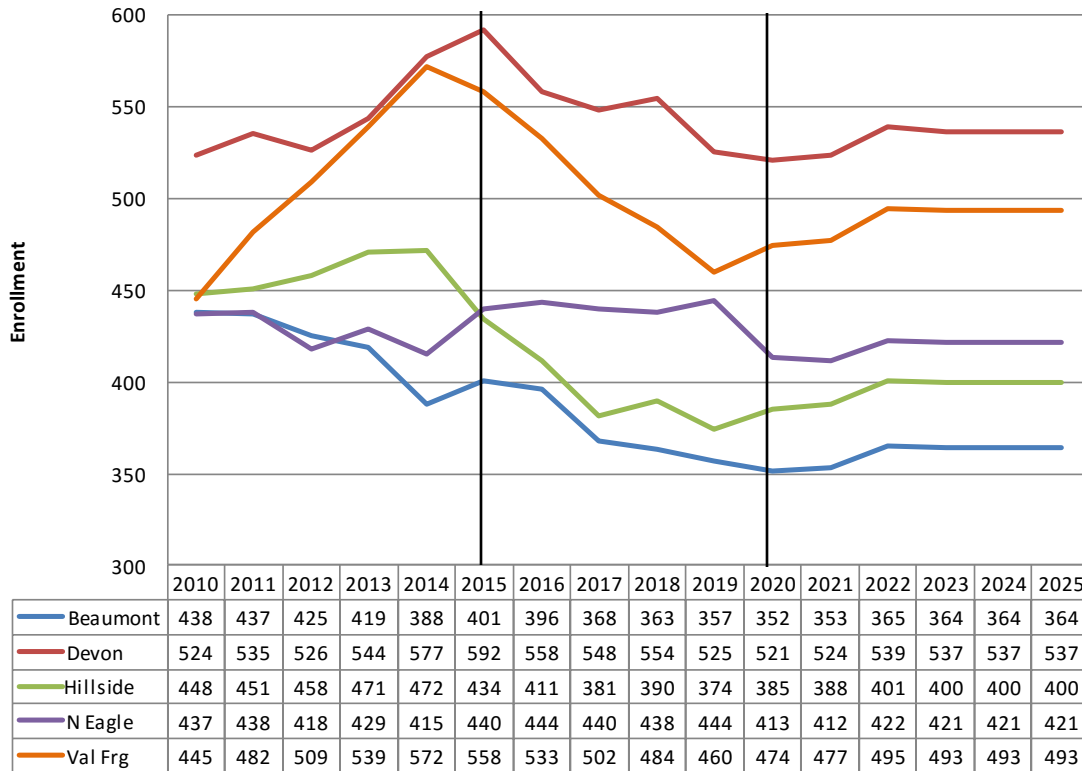
A year-to-year breakdown by grade level is as follows;

		K	1	2	3	4	TOTAL	Average	Change
Historic	2010	75	102	91	85	92	445		
	2011	97	87	110	98	90	482		
	2012	83	115	93	115	103	509		
	2013	80	115	117	105	122	539	518	
	2014	95	112	119	128	118	572		
	2015	65	114	113	127	139	558		113 25.4%
Projected	2016	73	82	119	122	137	533		
	2017	64	92	86	129	132	502		
	2018	76	81	96	93	138	484	491	
	2019	75	96	85	104	100	460		
	2020	75	95	100	92	112	474		-84 -15.7%
Extended	2021	75	95	99	109	98	477		
	2022	75	95	99	108	117	495		
	2023	75	95	99	108	116	493	490	
	2024	75	95	99	108	116	493		
	2025	75	95	99	108	116	493		19 4.0%

Elementary Enrollments Comparative

All **K to Grade 4** elementary enrollments have peaked in the historic period with the exception of New Eagle ES which peaks in the projection period

Comparative Enrollments: Elementary Schools



		Beaumont	Devon	Hillside	New Eagle	Valley Forge
Historic	2010	438	524	448	437	445
	2011	437	535	451	438	482
	2012	425	526	458	418	509
	2013	419	544	471	429	539
	2014	388	577	472	415	572
	2015	401	592	434	440	558
Projected	2016	396	558	411	444	533
	2017	368	548	381	440	502
	2018	363	554	390	438	484
	2019	357	525	374	444	460
	2020	352	521	385	413	474
Extended	2021	353	524	388	412	477
	2022	365	539	401	422	495
	2023	364	537	400	421	493
	2024	364	537	400	421	493
	2025	364	537	400	421	493



Middle School Enrollments

Tredyffrin-Easttown MS

Grade 5-8 historic enrollments at the Tredyffrin-Easttown Middle School peaked in year 2013 at 1,096 students, 57 students more than at the beginning of the period. The historic period averaged 1,072 students.

The projected period averages 1,191 students with a period and projection high at 1,121 students in year 2019.

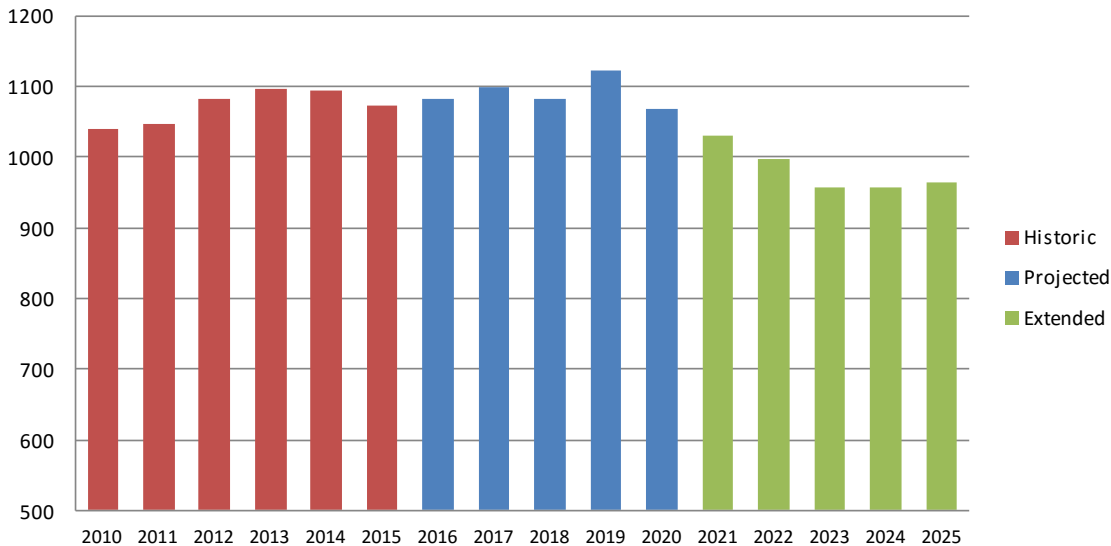
The extended projection period averages 981 students ultimately decreasing to 956 students, a period and projection low in year 2024.

Enrollments are increasing throughout the historic to an historic high of 1,096 students in 2013.

In the projection period, enrollment peaks at 1,121 students in year 2019.

The TEMS projection includes 9 students from new housing in the projection period.

Tredyffrin-Easttown MS Enrollment by Year



A year-to-year breakdown by grade level is as follows;

		5	6	7	8	TOTAL	Average	Change	
Historic	2010	288	237	245	269	1,039			
	2011	272	286	236	253	1,047			
	2012	289	275	281	237	1,082			
	2013	250	294	270	282	1,096	1,072		
	2014	271	263	292	268	1,094			
	2015	249	268	262	294	1,073		34	3.3%
Projected	2016	301	252	266	264	1,083			
	2017	276	305	250	268	1,098			
	2018	246	280	303	253	1,083	1,091		
	2019	289	249	278	305	1,121			
	2020	249	293	247	280	1,069		-4	-0.4%
Extended	2021	240	252	290	249	1,031			
	2022	211	243	250	292	996			
	2023	251	214	240	252	957	981		
	2024	248	254	212	242	956			
	2025	248	251	251	213	965		-104	-10.1%



Middle School Enrollments

Valley Forge MS

Grade 5-8 historic enrollments at the Valley Forge Middle School peaked in year 2011 at 1,014 students, and ended the period 25 students more than at the beginning of the period. The historic period averaged 999 students.

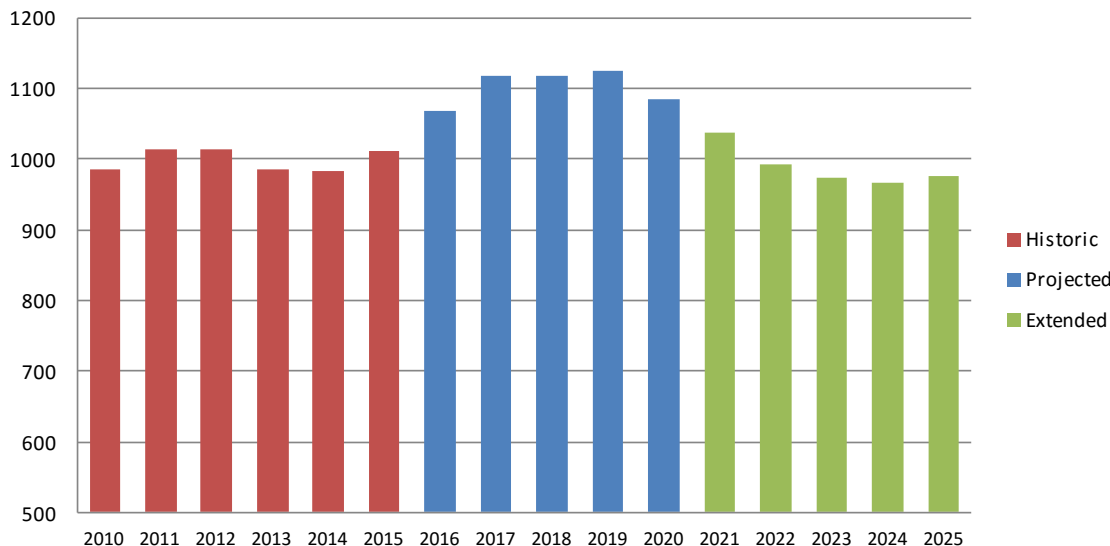
Enrollments are increasing throughout the historic and projection periods to an end of projection high of 1,130 students in 2019.

The projected period averages 1,103 students and peaks at 1,125 students in year 2019.

The VFMS projection includes 12 student from new housing in the projection period.

The extended projection period averages 990 students with a decreasing enrollment to 968 students in 2024, a period low that is 18 students fewer than at the beginning of the historic period.

Valley Forge MS Enrollment by Year



A year-to-year breakdown by grade level is as follows;

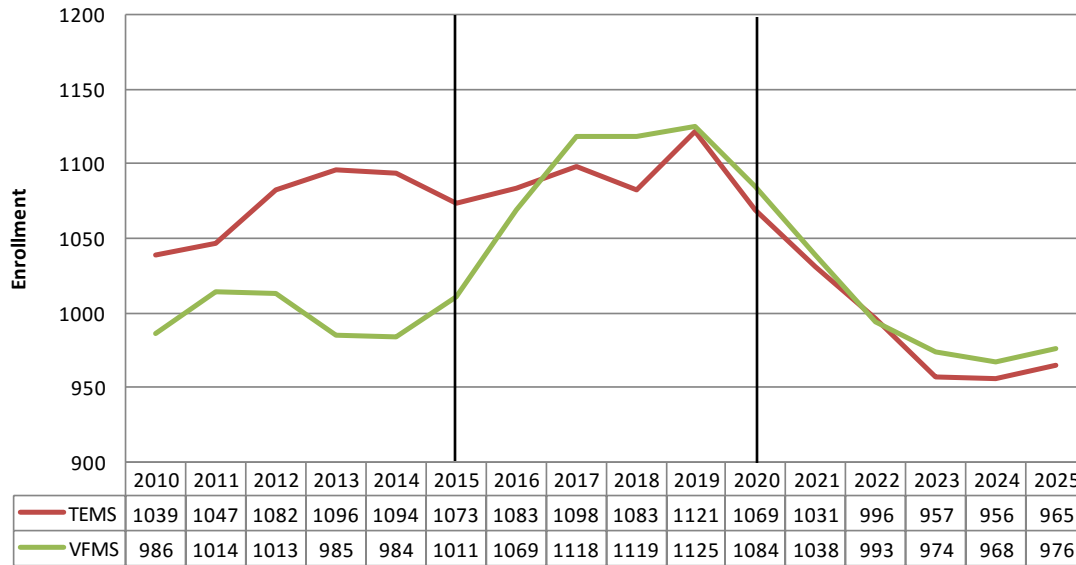
		5	6	7	8	TOTAL	Average	Change
Historic	2010	240	264	254	228	986		
	2011	245	249	266	254	1,014		
	2012	243	248	255	267	1,013		
	2013	231	243	252	259	985	999	
	2014	252	237	244	251	984		
	2015	257	257	249	248	1,011		25 2.5%
Projected	2016	290	264	264	252	1,069		
	2017	283	297	271	268	1,118		
	2018	255	288	303	273	1,119	1,103	
	2019	267	259	294	305	1,125		
	2020	252	272	265	296	1,084		73 6.9%
Extended	2021	238	257	277	266	1,038		
	2022	210	243	262	279	993		
	2023	249	214	248	264	974	990	
	2024	247	254	218	249	968		
	2025	247	251	259	220	976		-108 -10.4%



Middle School Enrollments Comparative

Both Grade 5-8 Middle Schools will peak in 2019-20 near the end of the projection period.

Comparative Enrollments: Middle School



		TEMS	VFMS
Historic	2010	1039	986
	2011	1047	1014
	2012	1082	1013
	2013	1096	985
	2014	1094	984
	2015	1073	1011
Projected	2016	1083	1069
	2017	1098	1118
	2018	1083	1119
	2019	1121	1125
	2020	1069	1084
Extended	2021	1031	1038
	2022	996	993
	2023	957	974
	2024	956	968
	2025	965	976

Middle School Counselors

HISTORY

ENROLLMENT

CASELOADS

History of Middle School Counselors

1993 - 2000

- 3 counselors per middle school
- 1 counselor per Grades 6, 7, 8
- Grade 5 divided among the 3 counselors
- caseloads: 265-280 students

2000 - 2011

- 4 counselors per middle school
- 1 counselor per Grades 5, 6, 7, 8
- caseloads: 225-289 students

History of Middle School Counselors

2011: budget strategy to reallocate staff was implemented and resulted in a return to 3 counselors in each middle school

2011 - current

- 3 counselors per middle school
- 1 counselor per Grades 6, 7, 8
- Grade 5 divided among the 3 counselors
- current caseloads: 331-362 students

Middle School Enrollment

<u>Year</u>	<u>T/EMS</u>	<u>VFMS</u>	<u>Year</u>	<u>T/EMS</u>	<u>VFMS</u>
1993	648	653	2015	1073	1011
2000	851	865	2016*	1083	1069
2010	1039	986	2017*	1098	1118
2011	1047	1014	2018*	1083	1119
2012	1082	1013	2019*	1121	1125
2013	1096	985	2020*	1069	1084
2014	1094	984			

*projected based on October 2015 Demographic Study

Average Caseloads

	2010 - 2011	2011 - 2012	2015 - 2016	2016 - 2017	2017 - 2018	2018 - 2019	2019 - 2020	2020 - 2021
Elementary 1 per school*	458	469	404	389	372	370	359	357
Middle 3 per school	N/A	344	347	359	369	367	374	359
4 per school	253	N/A	N/A	269	277	275	281	269
High School 9 counselors	224	228	230	236	239	238	239	247

* a counselor was added in 2014-2015 and splits time between Devon and VF Elementary due to enrollment